
WARNING:

- This paintball marker/gun is not a toy nor is it intended for unsupervised use by persons under the age of 18 years.
- Misuse may cause serious injury or death.
- Eye Protection designed for paintball use must be worn by the user and any person within range.
- Read operation manual before using.
- Do not field strip or remove any parts while marker is pressurized.

-
- Always keep in mind that the sport of Paintball will be viewed and judged upon your safe and sportsmanlike conduct.

TIPPMANN

PNEUMATICS, INC.

Get Your Heart Pounding With A Tippmann!

A-5

Owner's Manual
CO₂ POWERED
PAINTBALL MARKER



TIPPMANN

PNEUMATICS, INC.

3518 Adams Center Road, Fort Wayne, IN 46806
P) 260-749-6022 • F) 260-749-6619
www.tippmann.com

CONGRATULATIONS on your purchase of a “Tippmann A-5” paintball marker. We believe it to be the most accurate and durable paintball marker available. The *Tippmann A-5* will give many years of dependable service if cared for properly.

Please take time to read through this manual thoroughly and become familiar with the “Tippmann A-5” parts, operation, and safety precautions before you attempt to load or fire this marker.

INDEX

Table of Contents	
Warning/Liability Statement	5
Safety is your Responsibility	5
Specifications	7
Getting Started	8
1. Tank Installation	8
2. Hopper & Ball Feeder	9
3. Velocity Adjustment	12
4. Rear Sight Adjustment	12
Schematic	10-11
Unloading Your Marker	13
1. Tank Removal	13
Cleaning & Maintenance	14
Field Stripping	14
1. Receiver Disassembly	15
Repairing Tank Leaks	17
Storage	17
Warranty and Repair Policy	18
1. Warranty or Repair Procedure	18
Warranty Registration Card	19

Warning/Liability Statement

This marker is classified as a dangerous weapon and is surrendered by Tippmann Pneumatics, Inc. with the understanding that the purchaser assumes all liability resulting from unsafe handling or any action that constitutes a violation of any applicable laws or regulations. Tippmann Pneumatics, Inc. shall not be liable for personal injury, loss of property or life resulting from the use of this weapon under any circumstances, including the intentional, reckless, negligent or accidental discharges.

All information contained in this manual is subject to change without notice. Tippmann Pneumatics, Inc. reserves the right to make changes and improvements to products without incurring any obligation to incorporate such improvements in products previously sold.

Safety is Your Responsibility!

The ownership of this weapon places upon you the total responsibility of its safe and lawful use. You must observe the same safety precautions as you would any firearm to assure the safety of not only yourself but everyone around you. The user should at all times use caution when using this marker. Always remember that the game of Paintball can only survive and grow if it remains SAFE!

- Do not load or fire this marker until you have completely read this manual and are familiar with its mechanical operation and handling characteristics.
- Handle this and any marker as if it were loaded at all times.

-
- Never point a marker at anything you do not intend to shoot.
 - Always keep the muzzle pointed down or in a safe direction, even if you stumble or fall.
 - All persons within a 200 yard radius should always wear eye protection in the form of approved goggles or full face mask and never shoot at a person who is not similarly protected.
 - Pressurize and load the marker only when the marker will be immediately used. Unload and remove the CO₂ cylinder immediately after use for safe storage.
 - Dress appropriately when playing the game of paintball. Avoid exposing any skin when playing the game of paintball. Even a light layer will absorb some of the impact and protect you from the paintballs.
 - Keep exposed skin away from escaping CO₂ gas when installing or removing cylinder. CO₂ gas is very cold and can cause frostbite under certain conditions.
 - Use only .68 caliber paintballs. Never load or fire any foreign objects.
 - Do not field strip or otherwise disassemble this marker while it is pressurized with gas.
 - Do not look directly into the barrel. Accidental discharge into the eyes may cause permanent injury or death.
-

-
- Avoid alcoholic beverages before and during the use of this marker. Handling markers while under the influence of drugs or alcohol is a criminal disregard for public safety.
 - Avoid shooting an opponent at point blank (6 feet or less).
 - If you purchased a 12 gram cartridge or any other form of adapter with this marker be sure to read and follow the instructions that came with the adapter.
 - Never fire your marker at personal property of others, the paintball can stain the paint of automobiles and houses.

Specifications

Model	Tippmann A-5
Caliber68
Action	Semi-Automatic (Open bolt blow-back)
Power	(Optional) CO ₂ cylinder
Magazine Capacity	200 Rd Hopper
Cycle Rate	13 RPS
Standard Barrel Length	8.5"
Overall Length (with standard barrel & no tank)	20"
Weight (without tank)	3.5 lbs.
Effective Range	150+ ft.

Getting Started

Note: *Eye protection designed for paintball use must be worn at all times when handling this marker by the user and any person within range.*

1) Standard Tank Installation Into Pistol Grip Adapter.

A) First, make sure that the marker is on SAFE mode. Press safety "In" on left receiver half to lock trigger & put marker in SAFE mode. (When safety button on left side of marker shows red, the marker is in FIRE mode and marker can fire.)

B) Next, cock the marker by sliding the bolt cocking handle all the way back until you hear/feel the bolt lock into place, then release the cocking handle to its forward position.

C) To install the tank, insert the tank valve end into the tank adapter at the back end of the pistol grip. Twist the tank clockwise into the marker, until it stops. Adjust the butt plate if necessary. Your marker is ready to fire once you switch to FIRE mode from SAFE mode.

2) Hopper and Ball Feeder

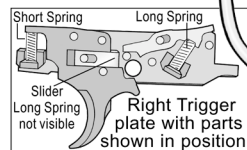
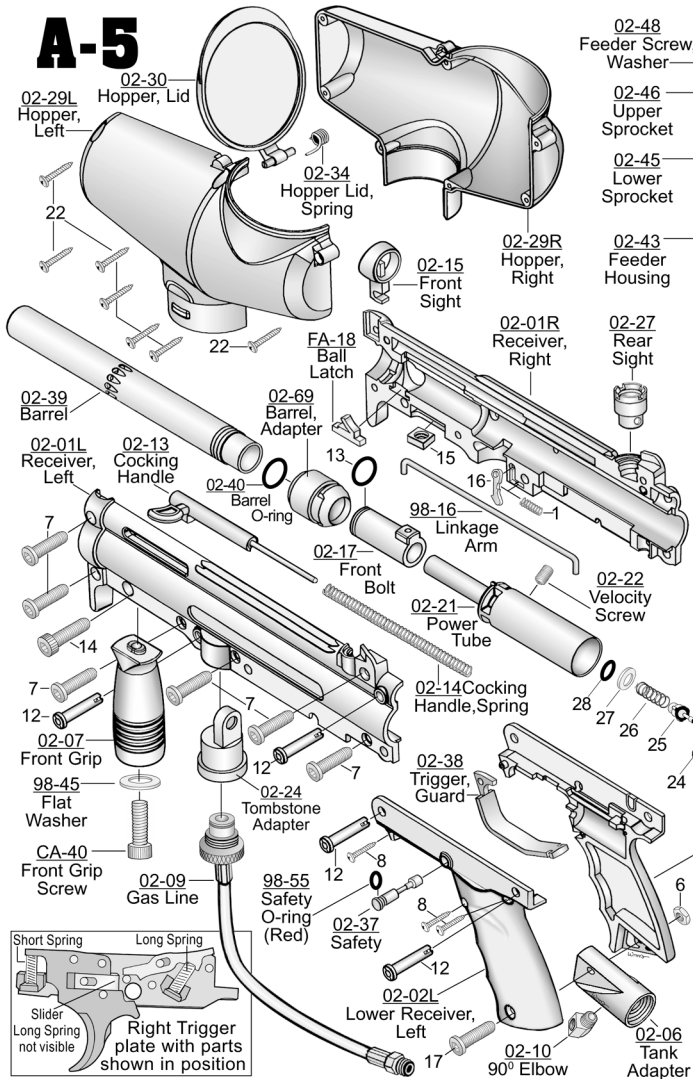
Make sure that the hopper is clean and free of debris so it will feed the marker smoothly.

Make sure that the ball feeder housing is clean and free of debris and the star feeders turn freely when the manual advance lever knob is pushed.

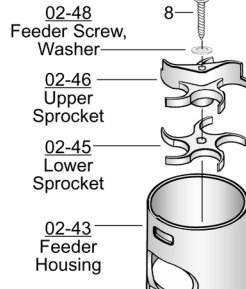
Install the hopper neck into the ball feeder housing aligning the hopper neck tab to fit into the cutout in the ball feeder housing. Now you are ready to load your hopper with paintballs.

After filling the hopper with paintballs the chamber will still be empty. You need to push the feeder manual advance lever to chamber a paintball.

A-5

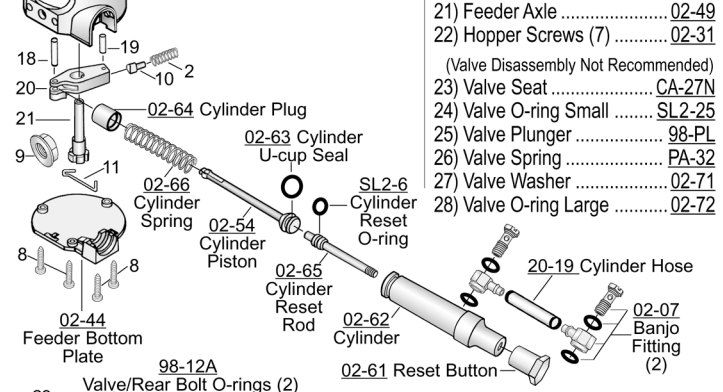


TIPPMANN A-5 PARTS



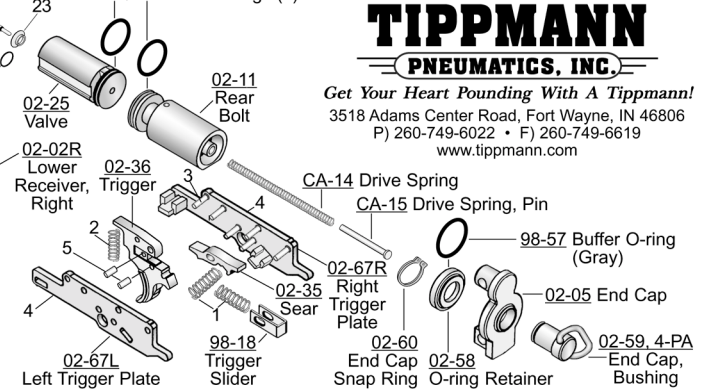
- #)Schematic Description (Quan) **PART#**
- 1) Trigger Spring (Long) (3) 02-20
 - 2) Trigger Spring (Short) (2) 02-20S
 - 3) Trigger Plate Pins (6) 02-33
 - 4) Trigger Plates .. 02-67L & 02-67R
 - 5) Trigger Slider, Pins (2) 98-19
 - 6) 10-32 Hex Nut (7) 9-PA
 - 7) Receiver Bolt (Short) (6) . 98-01A
 - 8) Screws (8) PL-42A
 - 9) Feeder Housing, Nut 02-42
 - 10) Ratchet Spring Guide 02-51

- #)Schematic Description (Quan) **PART#**
- 11) Feeder Ratchet, Spring 02-50
 - 12) Receiver Pin w/Spring(4) . 02-18/19
 - 13) Front Bolt O-ring SL2-4
 - 14) Feeder Housing Bolt 02-41
 - 15) 1/4-20 Nut PL-42D
 - 16) Tombstone Latch 02-73
 - 17) Receiver, Bolt (Long) 98-01B
 - 18) Ratchet, Pin (Long) 02-52L
 - 19) Ratchet, Pin (Short) 02-52S
 - 20) Ratchet 02-53
 - 21) Feeder Axle 02-49
 - 22) Hopper Screws (7) 02-31

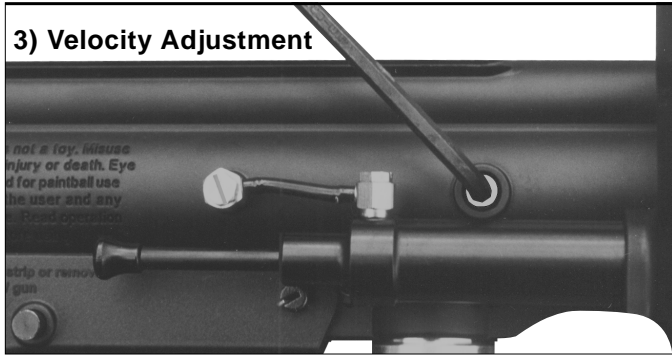


TIPPMANN PNEUMATICS, INC.

Get Your Heart Pounding With A Tippmann!
3518 Adams Center Road, Fort Wayne, IN 46806
P) 260-749-6022 • F) 260-749-6619
www.tippmann.com



3) Velocity Adjustment



To adjust the velocity use the small allen wrench included with your marker. The velocity adjustment screw is located on the right side of the marker. To adjust the velocity down, turn the screw inward or clockwise. To turn the velocity up, turn the screw out or counterclockwise.

Note: You must turn the velocity screw in past the receiver before doing any disassembly. The valve will not slide out of the marker if the velocity screw is adjusted out too far.

4) Rear Sight Adjustment

Rotate the rear sight to preferred width to allow easy sighting.

Unloading Your Marker

To unload your marker first remove the hopper. Then, point your marker in a safe direction and fire several times to be sure there are no balls left in the feeder or lodged in the chamber.

1) Tank Removal

To remove a charged CO₂ cylinder, turn the cylinder approximately 3/4 of a turn counterclockwise or out. This allows the tank pin valve to close so that no CO₂ will enter the marker. Point the marker in a safe direction and fire the remaining CO₂ in the marker by pulling the trigger until the marker stops firing. (This may take 4-5 shots)

If your marker keeps firing after you have turned the tank 3/4 of a turn, the tank pin valve has not closed yet and you may have to turn the tank counterclockwise a little further.

If you turn the tank 3/4 of a turn and it begins to leak before you pull the trigger you have turned it too far and may have damaged the tank o-ring.

Because of the variances in tank valve parts, each tank varies slightly on exactly how far it should be turned. If this process does not work the tank pin valve could be too long.

Cleaning & Maintenance

To clean your paintball marker use a damp towel with water to wipe off paint, oil, and debris. We recommend using a premium gun oil (Hoppe's #9 gun oil) to maintain your marker in good working condition. To oil all internal parts, put 2 or 3 drops of oil in the tank adapter, then install the CO₂ tank and shoot the marker. We also recommend using white lithium grease on the barrel o-ring, safety o-ring and tank o-ring.

Note: Before doing any marker disassembly when cleaning, remove the CO₂ cylinder and unload your marker as outlined on page 13. Do not use any cleaning solvents.

Field Stripping

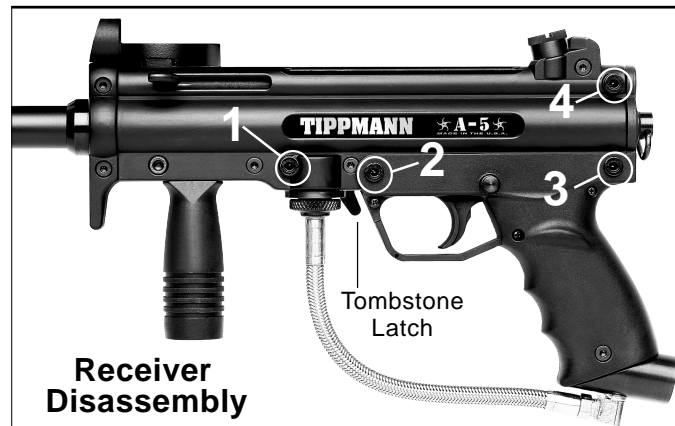
Before doing any marker disassembly remove the CO₂ cylinder and unload your marker as outlined on page 13. Put the marker in the uncocked position before beginning to field strip it. If your marker is cocked, hold the bolt cocking handle back - then pull the trigger and release handle forward which will un-cock the marker.

Front Grip Adjustment: Loosen Screw inside front grip to slide grip front or back, tighten to lock in place.

Barrel Removal: Twist counterclockwise to remove.

To remove front sight: Remove front sight screw just below front sight and slide sight upward.

To remove rear sight: Pull up and out.



FIRST: Remove CO₂ source before any disassembly: *Unload marker, remove the CO₂ cylinder and put the gun in the uncocked position as outlined on page 13 before beginning to field strip it.*

To remove cylinder gas line from upper receiver: Remove push pin (#1) in front of gas line plug from upper receiver, release Tombstone Latch and gas line will pull out.

To detach lower receiver (grip): Remove 2 lower receiver push pins (#2 & #3) to detach from upper receiver.

To remove trigger assembly from grip: Push Safety out left side of lower receiver and pull up on trigger assembly.

To access trigger parts: Pull left plate off trigger assembly. Do not remove 6 long pins from right plate.

FIRST: Remove CO₂ source before any disassembly:

Unload marker, remove the CO₂ cylinder and put the marker in the uncocked position as outlined on page 13 before beginning to field strip it.

Remove Gas line and lower receiver (see page 15)

To remove drive assembly (front bolt, power tube, valve, rear bolt, linkage arm, drive pin guide, drive spring and end cap assembly):

- 1) Screw velocity screw in past receiver.
- 2) Remove last push pin (#4) holding end cap in place.
- 3) Pull end cap out and tilt marker up, drive assembly parts should slide out the back.

To reinstall drive assembly parts and lower receiver:

- 1) Clean inside upper receiver and removed parts.
- 2) Insert valve into power tube with receiver gas line plug cutout aligned down to match power tube cutout. Insert Tombstone adapter to check fit.
- 3) Insert reassembled parts (front bolt, power tube/valve, rear bolt with linkage arm facing up) until Tombstone adapter can be inserted, push pin replaced and velocity screw can be accessed. (You may need to jiggle marker while sliding parts in).
- 4) Insert drive spring and drive pin, end cap unit and replace upper end cap pin.
- 5) Reinstall trigger group into grip; insert safety; reconnect lower to upper receiver; and install last 2 push pins.

NOTE: It is only necessary to disassemble upper receiver halves to access six parts, ball latch, front grip nut, cocking handle, cocking handle spring, Tombstone latch and Tombstone latch spring.

Ball Feed System removal

FIRST: Remove CO₂ source before any disassembly:

Unload marker, remove the CO₂ cylinder and put the marker in the uncocked position as outlined on page 13 before beginning to field strip it.

Remove banjo fitting bolt from upper receiver.

Remove housing screw from left front side of upper receiver and remove feed system.

Repairing Tank Leaks

The most common leak occurs from a bad tank o-ring. To replace a tank o-ring you must first remove the bad o-ring and then install a new one. This o-ring is located on the tip of your tank valve.

The best tank o-rings are made of urethane. The urethane o-rings are not affected by high CO₂ pressures. These may be purchased from Tippmann Pneumatics or your local paintball dealer.

Storage

You should store your marker in a dry area. Before storing your marker make sure that marker is cleaned and oiled so it does not rust. Store your marker with the bolt in the forward position. Empty and remove the CO₂ tank from the marker.

When removing your marker from storage you should re-oil before use.

Warranty - Repair Policy

Tippmann Pneumatics, Inc. is dedicated to providing you with the ultimate paintball marker and the quality support necessary for the utmost satisfaction in its use. Tippmann Pneumatics, Inc. warrants that this product is found free from defects in materials and workmanship for a period of 1 year from the original date of purchase by the initial owner/ purchaser. On claims submitted as outlined, Tippmann Pneumatics, Inc. will repair or replace, without charge, any of its markers that have failed through defect in material or workmanship.

Note: If you should encounter any problems with your marker and have aftermarket parts on it, please test the marker with the original stock parts before sending it in.

Repair Procedure

In the event warranty or other non-warranty related repairs are required, send the product(s) to Tippmann Pneumatics, Inc. with postage or delivery charges prepaid. Include a brief statement regarding the requested repair, your name, return address and telephone number where you can be reached during normal business hours, if possible. We strive to complete the necessary repair work within 24 hours and return it to you via regular ground UPS.

If you wish to have it returned quicker, request for next day air or Second day air and include your credit card number with the expiration date. Your card will be charged the difference in additional cost of Next day air or Second day air over regular ground shipping cost.

Call 1-800-533-4831
for assistance with
warranty and repair.

Ship to:
Tippmann Pneumatics, Inc.
3518 Adams Center Road
Fort Wayne, IN 46806

Warranty Card Note: *The Serial number is on the side of the marker below the cocking handle. (not Pat# or "A-5")*

Mail Completed Card to:
Tippmann Pneumatics, Inc.
3518 Adams Center Road
Fort Wayne, IN 46806

TIPPMANN
PNEUMATICS, INC.

COMPLETE WARRANTY CARD,
CAREFULLY TEAR OFF AT
PERFORATION AND MAIL.

WARRANTY REGISTRATION CARD

MODEL Tippmann A-5 SERIAL # _____

Find serial number on side of marker below cocking handle. (Not the Pat. #)

PURCHASED FROM _____

DATE _____ CITY _____ STATE _____ ZIP _____

YOUR NAME (Please print) _____

STREET _____

CITY _____ STATE _____ ZIP _____

PHONE # _____

TIPPMANN PNEUMATICS, INC. 3518 ADAMS CENTER ROAD FT. WAYNE, IN 46806
P) 260-749-6022 F) 260-749-6619 www.tippmann.com