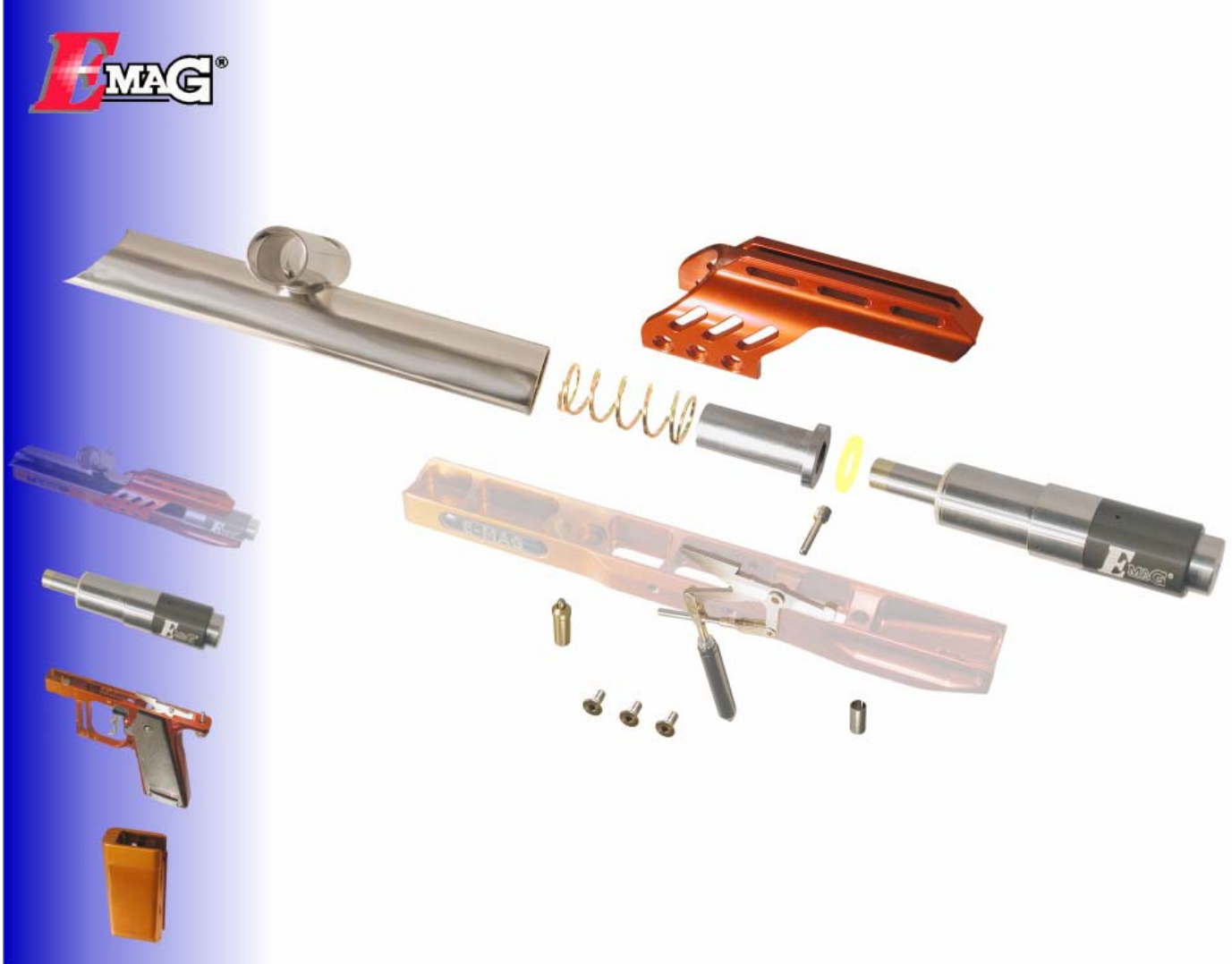


E-Mag Exploded View

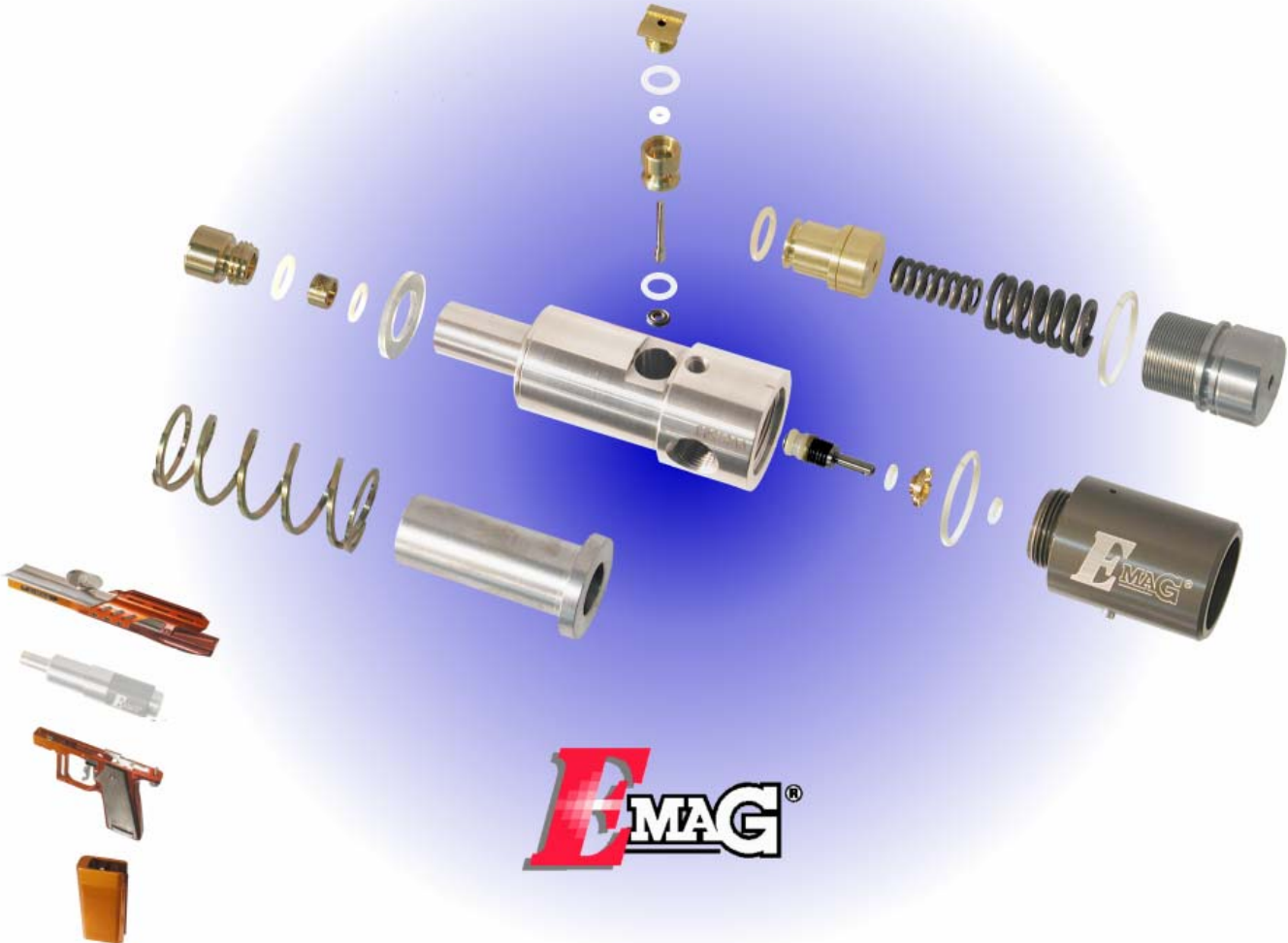


click on image

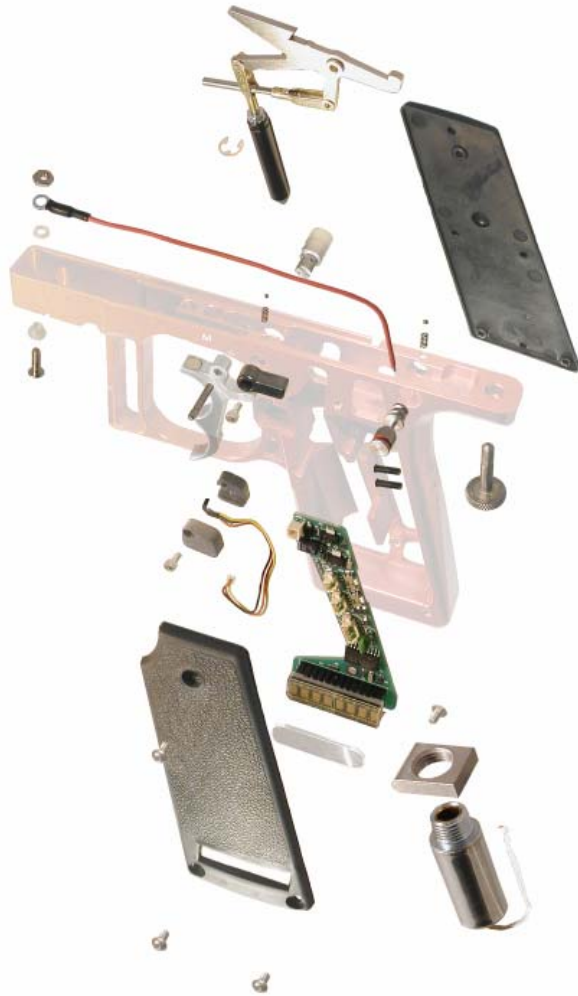
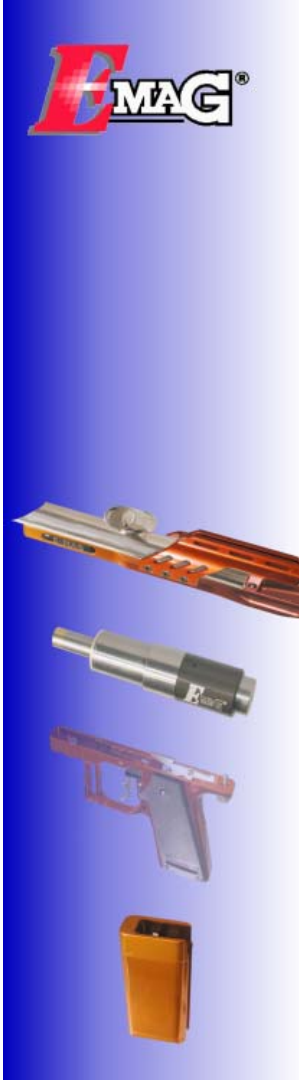
Rail and Main Body

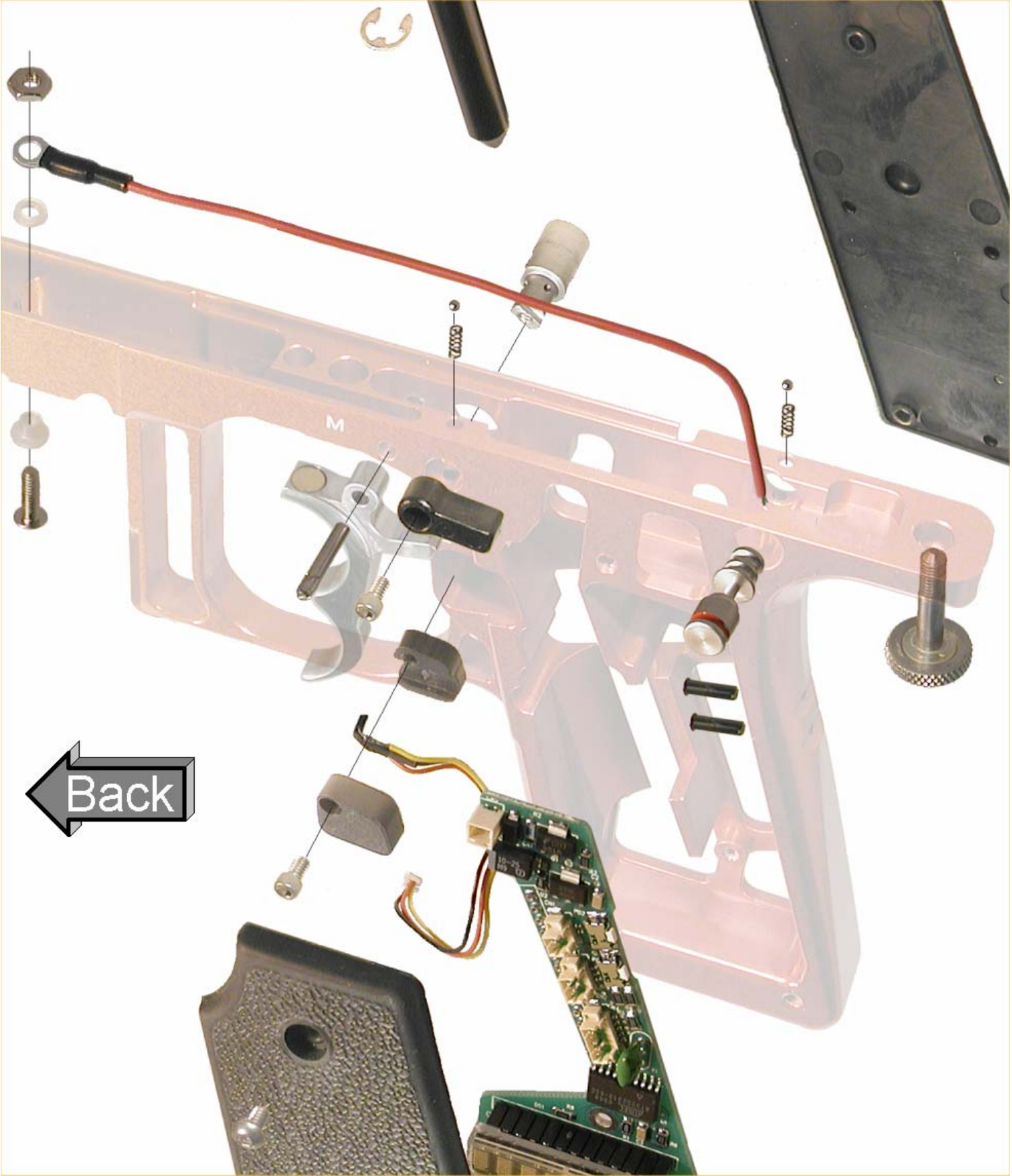


Valve, Bolt, and Spring



Frame and Electronics





← Back

Battery and Charger



E-Mag Rail
Part #1410



Available in black only.

[Order Online Now!](#)

[Back to Top](#)

Twist Lock Assembly
Part #223



Assembly that holds the barrel in.

[Order Online Now!](#)

[Back to Top](#)

Rail Bushing Part #129



The grip frame and rail are held in alignment with this bushing. It goes in the field strip screw hole.

[Order Online Now!](#)

[Back to Top](#)

Sear Assembly Part #1386



The entire sear assembly for the E-mag. Comes pre-adjusted for trigger rod length and solenoid plunger position.

[Order Online Now!](#)

Back to Top

Sear Axle Pin
Part #775



Screws in the side of the marker into the sear bushing.

[Order Online Now!](#)

[Back to Top](#)

Sight Rail
Part #1392



Comes in black only.

[Order Online Now!](#)

[Back to Top](#)

Sight Rail Screw Part #770



Very short flat head screws. Do not use hardware store screws; they might hit the sear.

[Order Online Now!](#)

Back to Top

Main Body (Hopper Left)
Part #1414



See the Main Body page under Upgrades for a complete selection.

[Order Online Now!](#)

[Back to Top](#)

Grips Part #1297



Rubber E-mag grips, sold by the pair.

[Order Online Now!](#)

[Back to Top](#)

Grip Screw/ Solenoid Mount Screw Part#1307

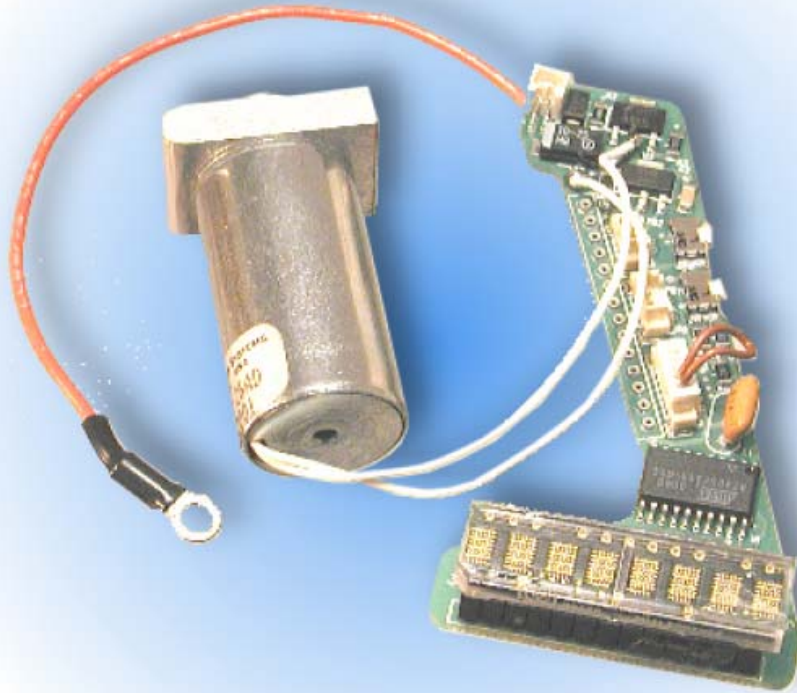


Grip screws, three per side. Also used to hold the solenoid mount in place.

[Order Online Now!](#)

[Back to Top](#)

PCB and Solenoid Assembly Part #1639



PC board and solenoid as one ready to go assembly. Comes pre programmed too!

[Order Online Now!](#)

Back to Top

Extender Button Part #1394



The little buttons in the back of the grip frame that are used to change the program settings.

[Order Online Now!](#)

[Back to Top](#)

Field Strip Screw Part #432



The screw that holds in the entire valve assembly.

[Order Online Now!](#)

[Back to Top](#)

Hall Harness Part #1304



This is the sensor that detects the magnet in the back of the trigger to fire the marker. Comes as a complete assembly.

[Order Online Now!](#)

[Back to Top](#)

Hall Holder/ Bottom
Part #1320



The bottom half of the holder for Hall Effect Sensor.

[Order Online Now!](#)

[Back to Top](#)

Selector Lever Bolt Part #1309



This bolt holds the selector lever on its shaft.

[Order Online Now!](#)

[Back to Top](#)

Hall Holder/ Top
Part #1422

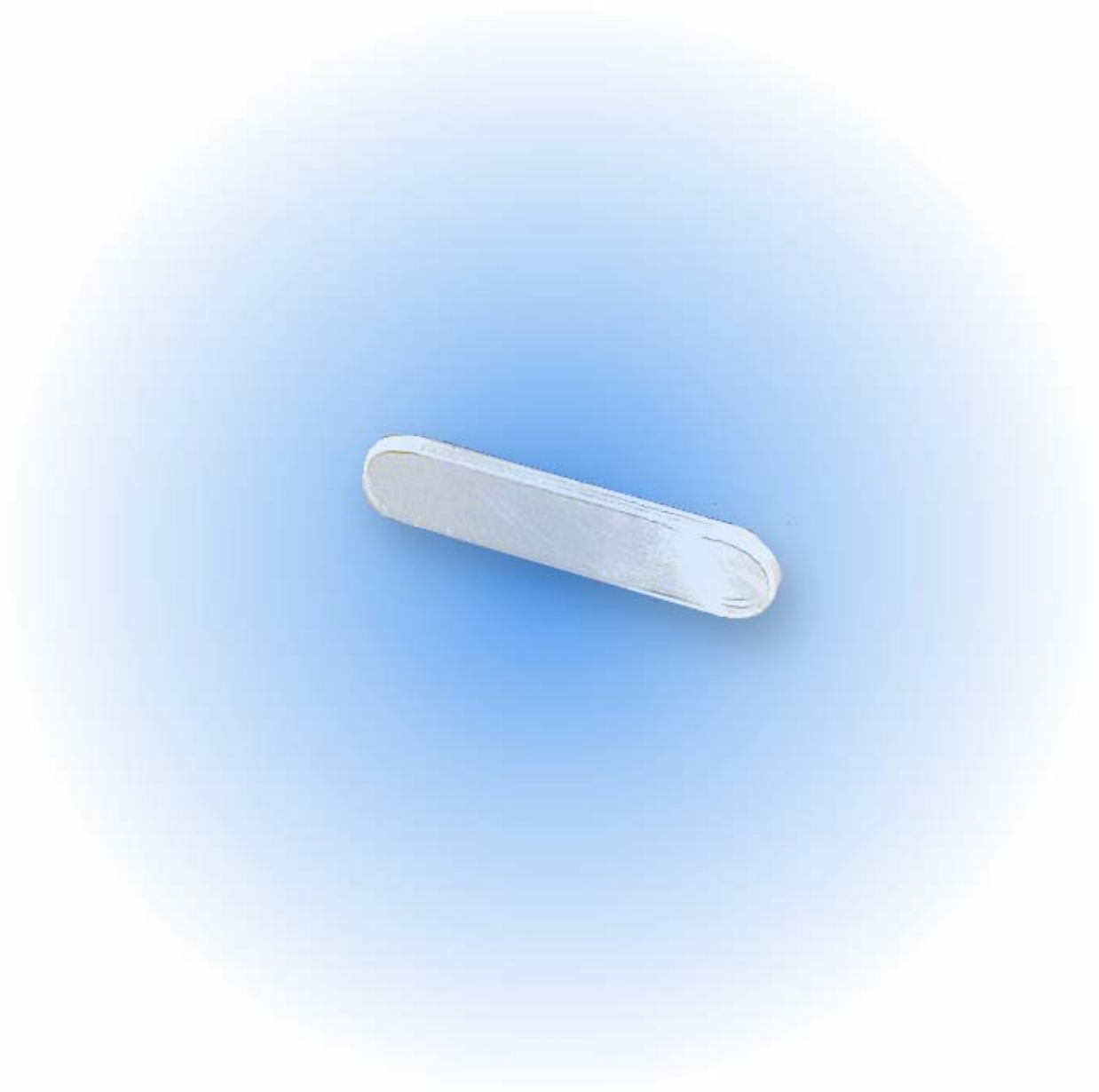


The top half of the sensor holder.

[Order Online Now!](#)

[Back to Top](#)

LED Window
Part #1316



Window inside of rubber grip that protects the LED display.

[Order Online Now!](#)

Back to Top

Selector Switch Lever Part #1321



Selector lever that switches between electronic and manual modes. Connects to selector switch.

[Order Online Now!](#)

[Back to Top](#)

Hall Mount Bolt
Part #1310



Bolt that holds the Hall Effect sensor mounts.

[Order Online Now!](#)

[Back to Top](#)

Selector Switch Part #1287



This switch controls if the marker is in electronic or manual mode. Be careful when removing this part; there are springs and ball detents under this piece.

[Order Online Now!](#)

[Back to Top](#)

Nylon Bushing Part #1328

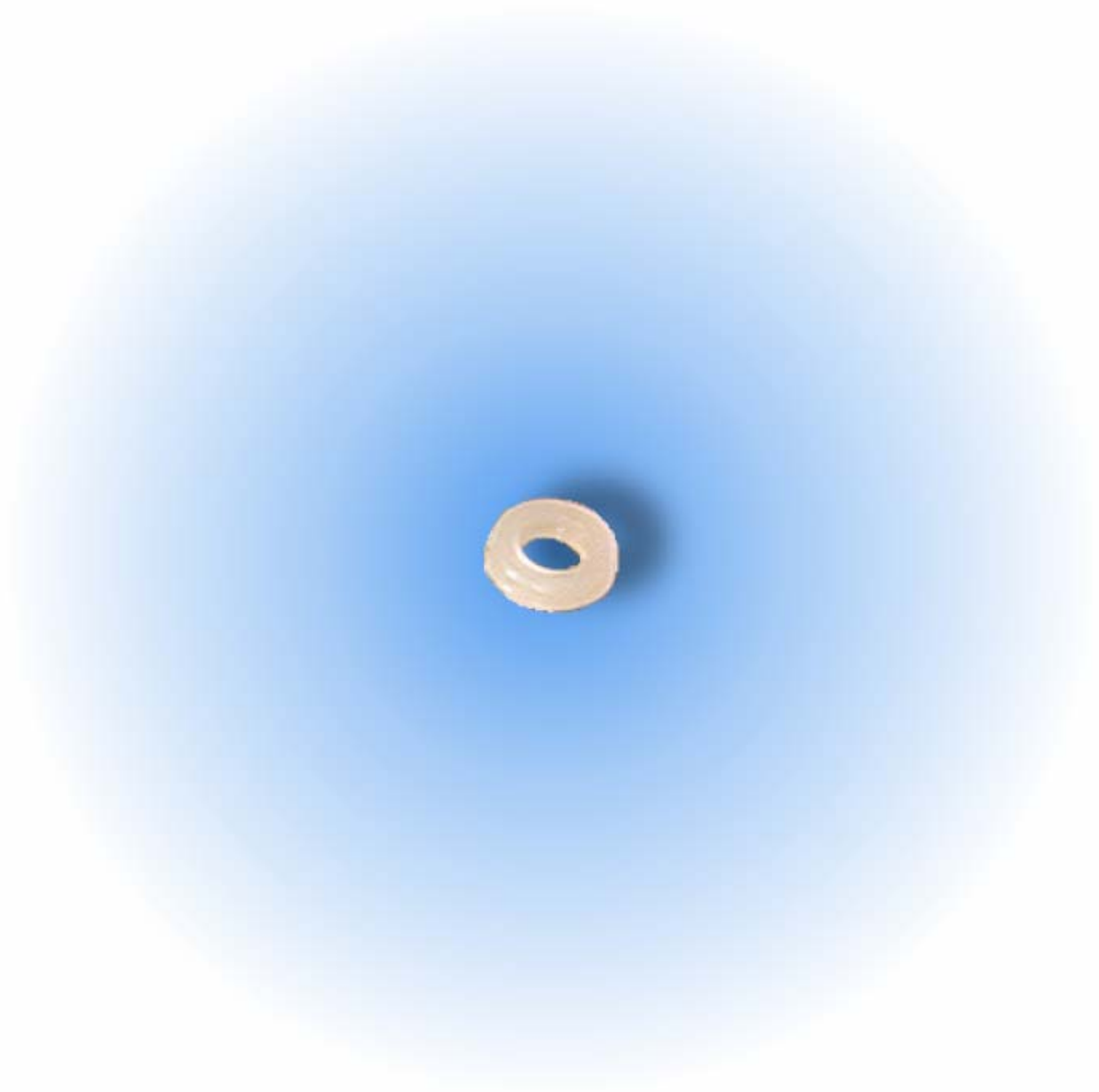


Insulator bushing for the battery contact screw in the front of the E-mag grip frame.

[Order Online Now!](#)

[Back to Top](#)

Nylon Washer
Part #1327



This is the other half of the insulator for the battery terminal mounting in the front of the grip frame.

[Order Online Now!](#)

[Back to Top](#)

Wire Lead
Part #1594



The power wire from the battery contact bolt in the front of the grip frame to the PC board.

[Order Online Now!](#)

[Back to Top](#)

Positive Terminal Nut Part #1312



This nut is part of the positive battery contact.

[Order Online Now!](#)

[Back to Top](#)

Positive Terminal Part #1311



This bolt is part of the positive battery contact and uses the nylon insulators to isolate it from the grip frame.

[Order Online Now!](#)

[Back to Top](#)

Sear Lock
Part #1462

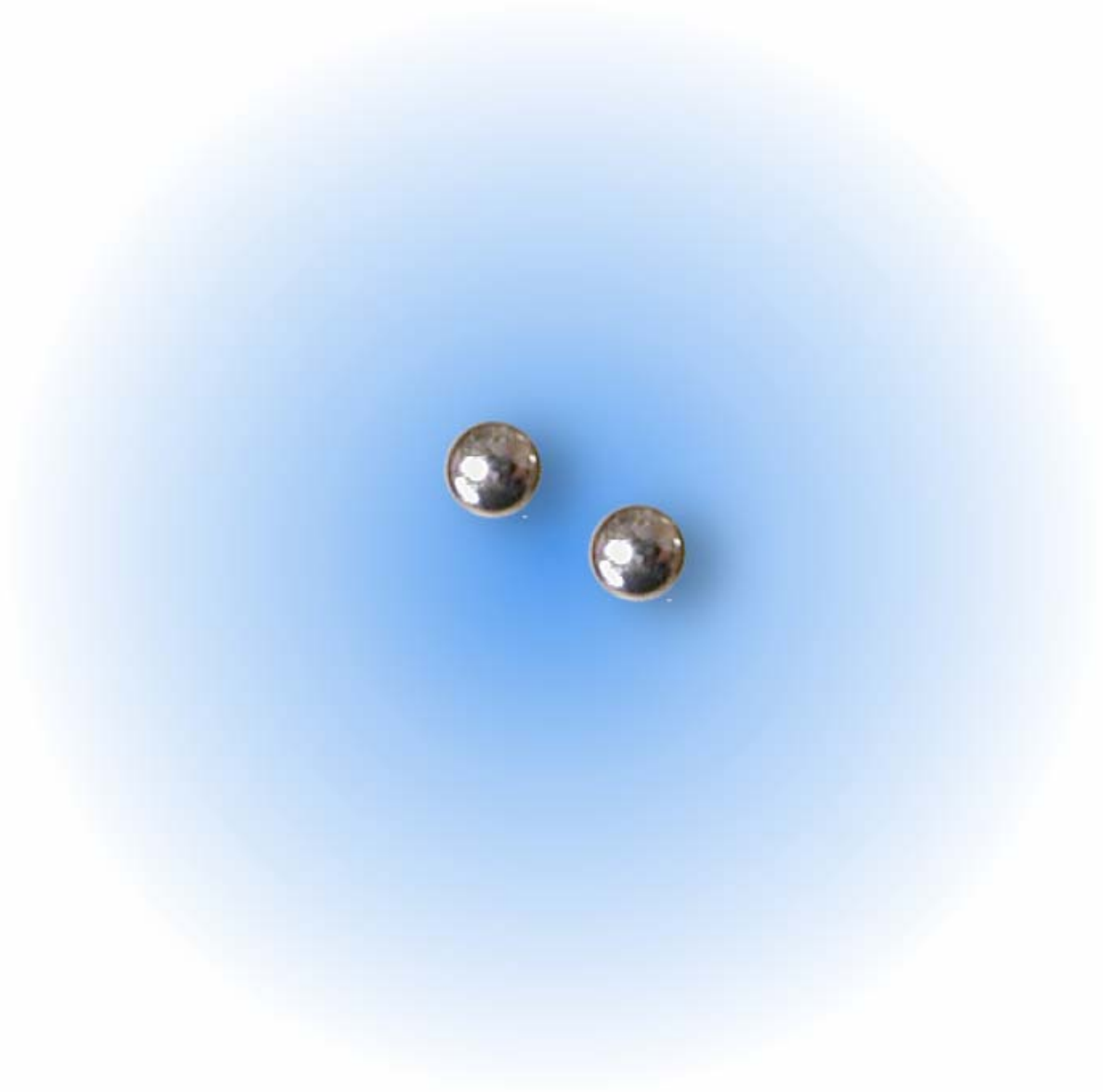


If you are able to see the red line the marker is off safe and will fire. Be careful when removing this shaft; there are springs and ball detents in the frame.

[Order Online Now!](#)

[Back to Top](#)

Safety Ball Part #195



Hard steel ball bearing used as the safety detent.

[Order Online Now!](#)

[Back to Top](#)

Safety Spring Part #197



Spring that goes under the ball detent in the safety.

[Order Online Now!](#)

[Back to Top](#)

Solenoid E Clip
Part #1470

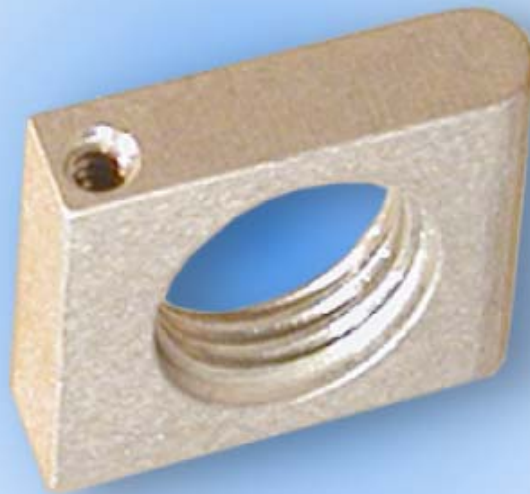


This clip holds in the solenoid plunger.

[Order Online Now!](#)

[Back to Top](#)

Solenoid Mount Part #1325



Solenoid screws into this mount and the whole thing slides into the grip frame.

[Order Online Now!](#)

Back to Top

E-Mag Trigger Part #1411



Entire ready-to-go trigger assembly. Includes magnets. Does not come in colors.

[Order Online Now!](#)

[Back to Top](#)

Magnet (Five Pack) Part #1313



Super strong rare earth magnet that is used to adjust trigger tension. Take them out for less, add them for more tension.

[Order Online Now!](#)

Back to Top

Trigger Pin Part #1314

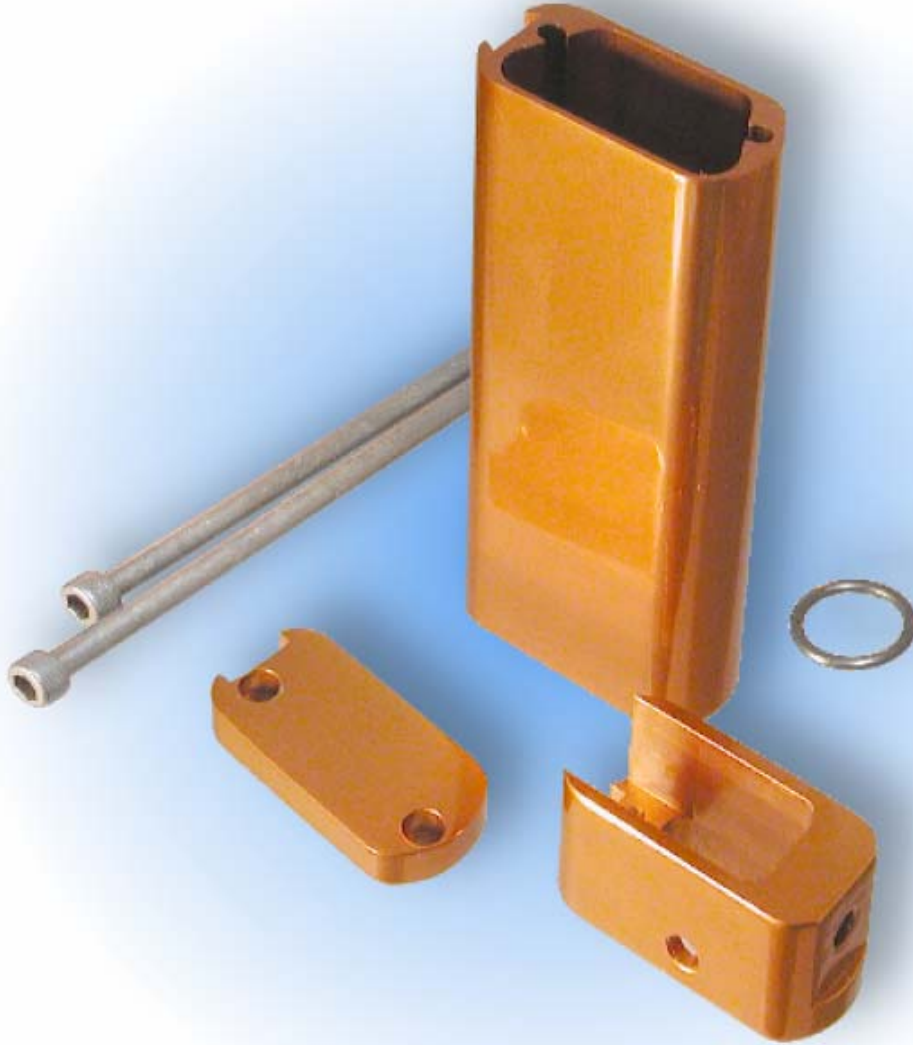


The axle for the sear. The original pin needs to be pressed out from the right side of the marker (side without the E-mag logo on valve). The new pin gets pressed in from the left side.

[Order Online Now!](#)

[Back to Top](#)

Battery Pack Housing Complete Part #1393



Complete housing assembly; battery not included. Comes in black only.

[Order Online Now!](#)

Back to Top

Battery Pack
Part #1223



This is the complete NiMh battery pack including contacts. Don't forget to recharge before use and remember to put the spacer o-ring back in the bottom of the housing.

[Order Online Now!](#)

[Back to Top](#)

Battery Saver Plug Part #1319



This is the pin that turns the battery on and off. Make sure you remove before flight!

[Order Online Now!](#)

[Back to Top](#)

E-Mag O-ring Battery Bottom Part # 1646

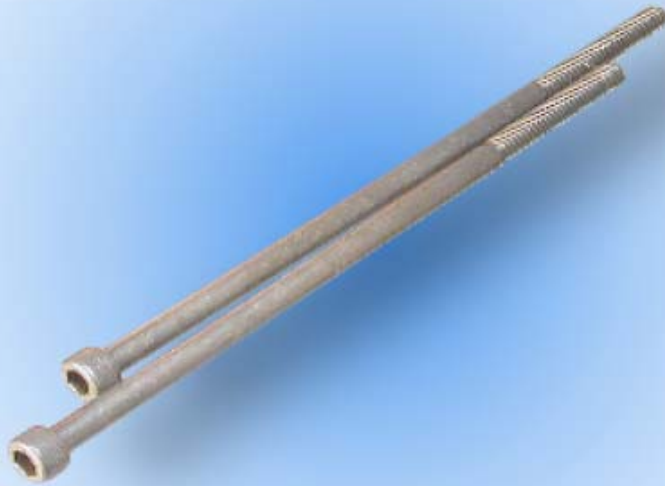


This o-ring goes under the battery pack inside the battery housing so the battery makes good contact and does not rattle.

[Order Online Now!](#)

[Back to Top](#)

Battery Housing Screws Part #1220



These are the bolts that hold the battery case together.

[Order Online Now!](#)

Back to Top

Battery Charger Cord Part #1388



Standard cigarette lighter adapter cord. Plugs into battery recharger.

[Order Online Now!](#)

Back to Top

Charger Assembly Part #1487



Battery charger for E-mag. Does not have the cigarette lighter adapter. Takes 12VDC input.

[Order Online Now!](#)

[Back to Top](#)

Solenoid
Part #1237



Solenoid that pulls the sear to fire the marker. Must be soldered to the PC board.

[Order Online Now!](#)

Back to Top

www.airgun.com
www.automags.org
Airgun-UK

Email to: office@airgun.com

Office hours:
9:00 am - 5:00 pm
(Central Time)
Monday through Friday
Office Tel: (847) 520-7507
Office Fax: (847) 520-7848

Tech Support hours:
10:00 am to 11:30 am,
1:00 pm - 4:00 pm
(Central Time)
Monday through Friday

Tech Support Tel:
(847) 520-7225



Back to Top