



**BATTLE TESTED**

**BT**<sup>TM</sup>  
**DELTA**  
**ELITE**  
**OPERATOR**  
**MANUAL**

# \* CONTENTS\*

1. Rules for Safe Marker Handling . . . . .	1
2. Included with your BT Delta Elite™ . . . . .	1
3. Introduction and Specifications . . . . .	2
4. Getting started and Basic Adjustments . . . . .	2
5. Rip Clip . . . . .	3
6. Apex™ Barrel . . . . .	4
7. E-Grip . . . . .	4
8. General Maintenance . . . . .	5
9. Disassembly . . . . .	5
10. Reassembly/ Storage and Transportation . . . . .	6
11. Troubleshooting . . . . .	7
12. Parts List . . . . .	8
13. Diagram . . . . .	10
14. Warranty Information . . . . .	12



# \* READ OWNERS MANUAL BEFORE USING.\*

## Rules of Safe Marker Handling

1. Treat every marker as if it were loaded.
2. Never look down the barrel of a paintball marker.
3. Keep your finger off the trigger until ready to shoot.
4. Never point the marker at anything you don't wish to shoot.
5. Keep the marker on "safe" until ready to shoot.
6. Keep the barrel blocking device in/ on the marker's muzzle when not shooting.
7. Always remove paintballs and propellant source before disassembly.
8. After removing propellant source, point marker in safe direction and discharge until marker is degassed.
9. Store the marker unloaded and degassed in a secure place.
10. Follow warnings listed on propellant source for handling and storage.
11. Do not shoot at fragile objects such as windows.
12. Every person within range must wear eye, face and ear protection designed specifically to stop paintballs and meeting ASTM standard F1776.
13. Always measure your marker's velocity before playing paintball and never shoot at velocities in excess of 91.44 meters (300 feet-per-second).

## Included with your BT Delta Elite™

1. BT-Delta Elite™ with Electronic Grip
2. Apex™ Elite barrel
3. Rip-Clip™
4. 9V Battery (In the grip)
5. Loader
6. Barrel Plug
7. Owner's Manual
8. Spare Parts kit
9. Magazine



Congratulations on your selection of the BT Delta Elite™ paintball marker. The BT Delta Elite™ is made to provide you with many years of reliable performance. BT Paintball Designs, Inc. is honored that you have chosen the BT Delta Elite™ as your marker of choice and hope you enjoy using this high quality product.

## BT Delta Elite™ Specifications

Model- Delta Elite™

Barrel- Apex™

Stock- Adjustable

Loader- Rip-Clip™

Caliber-68

Action- Semi-Auto, Ramping, and Full-Auto

Air Source- CO<sub>2</sub> or Compressed Air (HP Output only)

Batteries- One 9 volt and 4 AA's

Cycle Rate-13 BPS Max

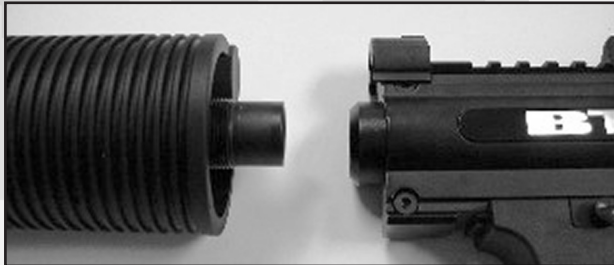
Main Body Material- Aluminum

Accuracy Range- 150+ ft.

## Getting Started and Basic Adjustments

### Barrel Installation

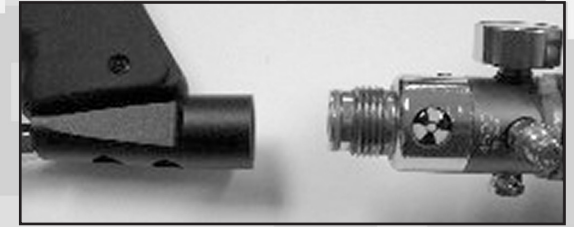
1. Make sure marker is degassed, hopper removed, no paintballs in the feed port or breech and the E-Grip is turned off.
2. While pointing marker in a safe direction, place the threaded end of the barrel into the front opening of the marker body.
3. Turn the barrel clockwise until it stops (do not over tighten).
4. Adjust the barrel accessories if necessary.
5. Install a barrel blocking device. This can be a barrel plug or other such device that prevents the accidental discharge of a paintball.



### Air Cylinder Installation

1. Make sure the barrel blocking device is properly installed and the E-grip is turned off.
2. While pointing the marker in a safe direction, cock the marker by pulling the cocking knob located on the left side of the marker back until it clicks and stops.
3. Release the cocking knob.
4. The marker is now cocked.

5. Locate the air cylinder adapter. The BT Delta Elite™ cylinder adapter is located at the base of the pistol grip.
6. Position the BT Delta Elite™ so that the air cylinder adapter is pointed upwards while keeping the muzzle of the marker pointed in a safe direction.
7. Insert the threaded cylinder valve end into the adapter.
8. Without pushing the cylinder, twist the cylinder clockwise and allow the threads to draw the cylinder into the marker until it stops. Your marker is now charged.



**Note:** If cylinder is installed incorrectly, you can damage the threads on your marker and cylinder. Make sure to align them properly before installing cylinder.



### Velocity Adjustment

1. Always check the velocity of the marker prior to playing paintball. Different playing fields may have different maximum velocity limits. At no time should you shoot at velocities above 300 feet-per-second.
2. Put on eye protection designed specifically for paintball and make sure that anyone within range of the BT Delta Elite™ does the same.
3. While pointing the marker in a safe direction, remove the barrel blocking device.
4. Point the BT Delta Elite™ over a chronograph that will measure the velocity of the paintballs discharged by the marker.
5. Turn the Marker's E-Grip On.
6. Pull the trigger and check the reading on the chronograph.
7. Locate the velocity adjuster screw on the center of BT Delta Elite™, under the name Plate.
8. Using a 5/32" hex key, turn the screw inward or clockwise to reduce the velocity, and outward or counterclockwise to increase the velocity of the paintballs discharged from the marker.

**Note:** Different Types/Brands of Paintballs will affect your markers velocity. Check your markers velocity before each day of play.

### Stock Adjustment

1. Push the stock adjustment lever to the left and adjust the stocks length by pulling or pushing on the back of the stock
2. Make sure the lever springs back to the right to lock it in position.



### Magazine Adjustment

It is possible to slide the Magazine assembly to your liking

1. Remove the 2 screws and metal plate
2. Slide the magazine assembly to new location.
3. Reinstall the plate and screws, making sure they are going into a body notch.
4. Tighten screws.



### Loading Paintballs

1. Put on an eye protective device designed specifically for paintball and make sure that anyone within range of the marker does the same.
2. Make sure the E-Grip is turned off and that a Barrel Blocking device is installed.
3. Load quality .68 caliber paintballs (leave some room for paintballs to move about inside loader).

### Rip-Clip™

#### Battery Installation

1. Remove the screw on top of battery door.
2. Install 4 x AA batteries following the polarity marking.
3. Reinstall the battery door screw. (Figure 1)



Figure 1

#### Rip-Clip Installation

1. Loosen up the spring screws. (Figure 2)
2. Clip on the BT Delta Elite™ between the 2 sight rails. (Figure 3)
3. Make sure the feed holes are aligned. (Figure 4)
4. Tighten up the spring screws. (Figure 5)



Figure 2



Figure 3



Figure 4



Figure 5

### Loader Installation

Insert the loader onto the Rip-Clip as indicated.

Turn the loader Counter-clockwise until it locked firmly.

(Figures 6-8)

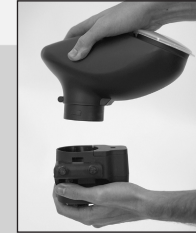


Figure 6



Figure 7



Figure 8

### Activating the Rip-Clip™

Locate the power button on the rear control panel. To turn on, press the button. The green LED comes on while the button is pressed; now release button. The green LED will now flash again for one second, go off, then flash quickly 1, 2, or 3 times indicating the speed it is currently set to. The motor will spin for a second and the loader is now ready to use. Do NOT fire your marker until after the initial motor spin has completed. Firing during this period can disrupt the auto-adjusting sound sensitivity and cause the hopper not to work properly. The green LED will flash repeatedly while the unit is on to show it is ready. If the LED flashing changes to red, then the batteries are low and need to be replaced.

To turn off, press and hold until the loader gives a RED indication. Release the button and loader will power down to the OFF state.

### Setting the Speed

1. When the Rip-Clip is first turned on, while the LED flashes for one long second, press and hold the power button again during this flash.
2. When done properly, the LED will now change to red and you can release the button.
3. The LED will only stay red for about 15 seconds, then change back to its flashing green sequence for regular operation if no buttons are pressed.
4. To set the speed during the red LED phase, push and release the button the number of times necessary based on what speed you desire.
5. Press once for normal slow speed, twice for faster normal speed, and three times for fastest speed. Each time you press and release the button during this sequence, the press of the button should last about one second.
6. If done too quickly, the board may not be set to the speed you desire. When done correctly, the red LED will go off, then flash the same number of times the button was pressed, indicating which speed it is now set to.
7. The motor will now spin up at the speed it is set to, it will stop, and now the speed is set and the unit is ready to use.

**Note:** Always use good name brand batteries. Using other types of batteries will affect the Rip Clips performance.

### Specifications:

Power requirements: 4AA batteries (not included)  
Capacity: 200+ paintballs  
Feed Rate: 20bps+  
Construction: Nylon

### Features:

Auto-Off 1 Hour  
Low Battery Indicator  
Ultra-Quiet Belt Drive  
Tactile Feedback Power Button

### Delta Elite Apex™ Barrel

The Apex barrel is the most advanced barrel in the world. You can adjust the barrel to shoot in different directions and set it to give you greater distance than any standard barrel.



#### Setting the Apex™ Barrel Ramp

1. Start with the Ramp in the OFF position (toward the back of barrel)
2. Follow all safety and paintball loading instruction for safe use.
3. Go to your fields shooting range or other approved area.
4. Gradually adjust the Ramp forward until you see the balls start to change there trajectory. The further you move the Ramp forward; the balls will have higher degree of curve.

#### Adjusting Direction of Shots

1. Adjust the Apex front by turning it.
2. Turning it right will give you a right hook
3. Turning it left will give you a left hook
4. Rotating it 180 degrees will give you a drop shot.
5. The standard position will give you a long shot.

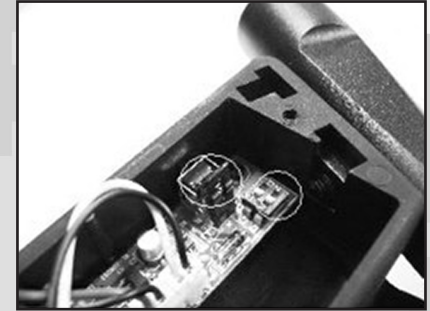
**Note:** It will be necessary to adjust the Ramp setting on the Apex barrel to the paint you are using. Different brands/types of paintballs will have a slightly different size. This will affect the amount of curve you get.

### Features

1. On/Off capability.
2. Hit previously untouchable targets with new curve feature.
3. Adjustable ramp switch - choose the desired level of the curve.
4. Left hook, right hook, drop shot and long flat trajectory shots with a twist of the barrel.
5. Easy to dial in targets and change the level of curve.

### E-Grip

The E-Grip has 3 different firing modes- Semi-Auto, Ramping and Full-Auto. The modes are changed by removing the left side grip and adjusting the dip switches located in the grip frame. The Delta Elite comes in Ramping mode from the factory and the Jumper in the frame must be removed to lock the firing mode to semi-auto. The E-Grip has an automatic shut-off after 1 hour of inactivity.



FIRING MODES		1	2	
1. RAMPING	(13 BPS)	OFF	OFF	
2. RAMPING	(10 BPS)	OFF	ON	
3. FULL AUTO	(13 BPS)	ON	OFF	
4. FULL AUTO	(10 BPS)	ON	ON	

Above Settings are with jumper ON. With jumper OFF, firing is semi-auto regardless of DIP settings.

**Note:** Always use good name brand batteries. Using other types of batteries will affect the marker performance.

#### Adjusting the Sear Height

To adjust the sear height, there is a set screw in the lower vertical arm of the sear that contacts the front of the solenoid. If it is necessary to raise the sear to engage the rear bolt, insert a 0.50" allen wrench past the side of trigger and turn the allen wrench counter clockwise. Make adjustments while the trigger frame is off the receiver (body) and the marker is degassed. Look down from the top of frame to help locate the set screw. Only turn the allen wrench 1/8 turn at a time and check engagement after each adjustment. Once the sear begins to engage the rear bolt, turn the set screw an additional half to 1 full turn.



## General Maintenance

Once the BT Delta is unloaded and the air cylinder is removed, you can use a damp cloth to wipe off paint, oil, dirt and debris. You can also use warm water to rinse the marker clean, but be careful not to get the internal components wet.

Once your marker is clean and dry you can re-oil using a light, premium marker oil.

(**Note:** Petroleum based and aerosol products can damage your markers o-rings. DO NOT USE ANY PETROLEUM BASED OR AEROSOL PRODUCTS ON YOUR MARKER.) To access the rear bolt and linkage arm you must remove the left receiver half. (See marker disassembly section.)

## Disassembly Instructions

### Removing the Rip-Clip™

1. Turn both locking screws counter-clockwise until they stop.
2. Gently pull then tilt the Rip-Clip away from the body and remove.



**Note:** The Locking screws are spring loaded.

### Removing Rip-Clip Anti Jam

1. Remove Rip Clip from marker
2. Pull out the inner sleeve, located in the left side feed port.
3. Gently lift the anti-jam assembly out.



**Note:** If you remove the Rip Clips drive cone, it will be necessary to Pre-Load the drive spring.

### Preloading the Rip-Clip's Drive Cone Spring

Rotate the cone clockwise until the upper and lower spring tabs hit each other. You should now have both spring tabs pressed together. Lift the drive cone SLIGHTLY and rotate it clockwise up and over the drive cup's tab (taking the upper spring tab) with it. Snap the drive cone down with the drive spring tab on the right side of the drive cup's tab and install the top screw. The drive cone spring is now pre-loaded and will snap back properly when wound up.



### Body Sight Rails Removal

1. Remove the Rip Clip and Barrel assembly.
2. Slide the small

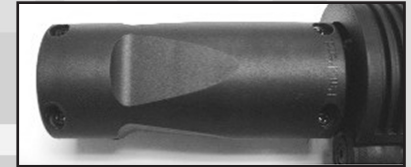
sight rail spacer off.

2. Loosen the 3 screws with a Phillips screwdriver on the left side of the sight rail.
3. Slide the sight rail toward the front of the marker and remove.

**Note:** It may not be necessary to loosen the 3 screws, see if it slides off first.

### Apex Barrel Disassembly

1. Remove barrel assembly from marker.
2. Loosen the 4 Phillips screws located at the front of the barrel.
3. Pull the two sides apart and take notice of the internal configuration.
4. If needed, wash the parts with warm water.



### Removing Foregrip

1. Remove the barrel assembly from marker.
2. Remove the foregrip retention pin.
3. Pull the front of the foregrip down and gently pull it forward.

**Note:** It is recommended that you DO NOT remove the Barrel from the complete barrel assembly, as you will lose the factory alignment to your marker.

### Magazine and Magazine Holder Removal

1. Push on the release tab to remove the magazine.
2. Remove the 2 screws and metal plate.
3. Slide the Magazine holder toward the front of the marker and remove.



### Trigger Frame Removal

1. Adjust the stock all the way out.
2. Remove the two grip retention screws from the E-Grip.
3. Push out the Acorn shoulder nuts with a small hex wrench or screwdriver nuts if they do not fall out.
4. Gently pull the frame down from the body





### ASA Removal

1. Remove the 2 screws which go thru the ASA with a 1/8" allen wrench.

### Stock Removal

(See body disassembly instructions )

### Body disassembly (Internal components)

To fully access the internal components, these parts must be removed first:

- Barrel assembly
- Rip-Clip and loader
- Sight rails
- Magazine assembly
- Grip frame

### Receiver (Body) Separation

Make sure the marker is in the un-cocked (forward position) before taking body apart.

1. Remove the Cocking Handle Cover (rubber bonnet).
2. Lay on a flat surface with the name plate facing up.
3. Remove the four upper receiver retention screws.
4. Lift name plate receiver away from other receiver half.

**Note:** The stock will be under some spring tension and may spring out when the top name plate receiver is lifted off.

**Note:** The retention screw located below the cocking handle slot is longer than the rest.

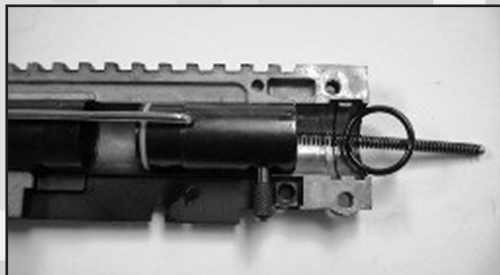


### Stock Removal

Once the body is separated, simply lift the stock from the body. Be careful not to lose any of the rear parts when removing the stock.

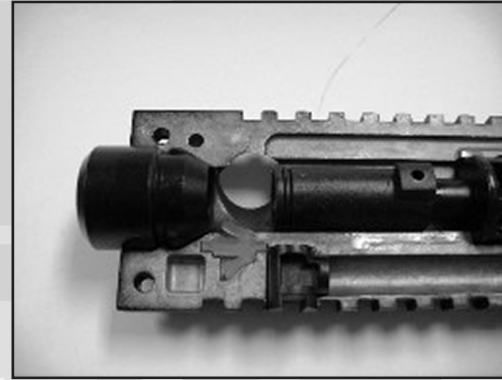
### Hammer, Cocking Handle and Connecting Rod Removal

1. Rotate Hammer counter-clockwise.
2. Remove Connecting Rod.
3. Remove Cocking Handle.
4. Slide Hammer rearward and remove.



### Barrel Adapter, Ball Retainer and Bolt Removal

1. Lift away Barrel Adapter (and barrel if still installed).
2. Lift out Ball Retainer.
3. Slide Bolt forward and remove



### Reassembly/ Storage and Transportation

#### Reassembly

To reassemble the marker, reverse the Disassembly instructions starting with the barrel adapter, ball retainer and bolt removal. While reassembling the marker, you should oil all O-rings and sliding parts. All parts and o-rings returned to the marker should be free of debris and visual nicks and scratches which can alter the performance of the marker. All screws returned to the marker must be tightened so there is no chance of them vibrating loose.

#### Storage and Transportation

1. BT Delta must be clear of all paint and propellant when not being used.
2. Be sure to have marker in "SAFE MODE" when not in use.
3. Make sure barrel blocking device is in place.
4. Store BT Delta™ and propellant in cool dry place.
5. Keep your BT Delta™ away from children without proper supervision.
6. Your BT Delta™ must be free of all paint and not attached to a propellant source while being transported to and from the playing field.
7. Observe and obey all local, state and federal laws concerning the transportation of paintball markers. For information concerning any of the laws in your area, contact your local law enforcement.

## Troubleshooting

PROBLEM	DIAGNOSIS	SOLUTION
Marker double firing or going full auto	<ul style="list-style-type: none"> <li>• Air cylinder low on air</li> <li>• Rear bolt oring worn or damaged</li> <li>• Rear bolt or sear worn</li> <li>• Rear bolt has no oil</li> <li>• Bad valve</li> <li>• Sear height is misadjusted</li> </ul>	<ul style="list-style-type: none"> <li>• Get air cylinder filled</li> <li>• Replace rear bolt oring</li> <li>• Inspect both for wear and replace if needed</li> <li>• Oil rear bolt oring area with paintball oil</li> <li>• Service or replace valve</li> <li>• Adjust sear height</li> </ul>
Marker does not recock	<ul style="list-style-type: none"> <li>• Rear bolt oring worn or damaged</li> <li>• Rear bolt oring is dry</li> <li>• Power tube is damaged</li> <li>• Sear height is misadjusted</li> <li>• Marker internals clogged</li> </ul>	<ul style="list-style-type: none"> <li>• Replace rear bolt oring</li> <li>• Oil rear bolt oring area with paintball oil</li> <li>• Replace power tube</li> <li>• Adjust sear height</li> <li>• Clean dirt and/or broken paintballs from inside receiver</li> </ul>
Marker leaking out of barrel	<ul style="list-style-type: none"> <li>• Valve leaking</li> </ul>	<ul style="list-style-type: none"> <li>• Service or replace valve</li> </ul>
Marker leaking at ASA	<ul style="list-style-type: none"> <li>• Tank oring damaged or missing</li> <li>• Tank or ASA damaged</li> </ul>	<ul style="list-style-type: none"> <li>• Replace tank oring</li> <li>• Replace tank and/or asa if needed</li> </ul>
E-Grip is not working	<ul style="list-style-type: none"> <li>• Battery is low on power</li> <li>• Battery is of low quality</li> <li>• Sear height is misadjusted</li> <li>• Board connectors are loose</li> <li>• Electronics are damaged</li> </ul>	<ul style="list-style-type: none"> <li>• Install new battery</li> <li>• Buy better name brand batteries</li> <li>• Adjust sear height</li> <li>• Check that connectors are plugged in fully</li> <li>• Replace damaged parts</li> </ul>
Rip-Clip is not working	<ul style="list-style-type: none"> <li>• Battery is low on power</li> <li>• Battery is of low quality</li> <li>• Batteries are installed incorrectly</li> <li>• Drive cone is not pre-loaded</li> </ul>	<ul style="list-style-type: none"> <li>• Install new battery</li> <li>• Buy better name brand batteries</li> <li>• Check the polarity markings</li> <li>• Pre-loaded drive cone spring</li> </ul>
Marker is breaking paint	<ul style="list-style-type: none"> <li>• Velocity is too high</li> <li>• Paint is of low quality or old</li> <li>• Ball detent damaged or backwards</li> <li>• Apex barrel is dirty</li> <li>• Apex ramp is set to high</li> </ul>	<ul style="list-style-type: none"> <li>• Lower velocity by turning screw clockwise</li> <li>• Try better fresh paint</li> <li>• Replace detent or check if its in backwards</li> <li>• Clean apex barrel</li> <li>• Lower the ramp setting</li> </ul>
Marker is double feeding	<ul style="list-style-type: none"> <li>• Ball detent is damaged</li> </ul>	<ul style="list-style-type: none"> <li>• Replace ball detent</li> </ul>
Paintballs not feeding into marker	<ul style="list-style-type: none"> <li>• Rip-Clip not installed correctly</li> <li>• Rip-Clip is not turned on</li> </ul>	<ul style="list-style-type: none"> <li>• Check Rip-Clip is installed correctly</li> <li>• Turn on Rip-Clip</li> </ul>
Velocity is low (Do NOT Exceed 300 FPS)	<ul style="list-style-type: none"> <li>• Velocity screw is in too far</li> <li>• Air source is low</li> <li>• Power tube is damaged</li> <li>• Drive spring is weak</li> </ul>	<ul style="list-style-type: none"> <li>• Turn the screw counter-clockwise to increase velocity</li> <li>• Get air cylinder filled</li> <li>• Replace power tube</li> <li>• Install a stiffer drive spring</li> </ul>
Velocity is high (Do NOT Exceed 300 FPS)	<ul style="list-style-type: none"> <li>• Velocity screw is out too far</li> <li>• Drive spring is too stiff</li> </ul>	<ul style="list-style-type: none"> <li>• Lower velocity by turning screw clockwise</li> <li>• Install a lighter drive spring</li> </ul>

**Parts List**

**BT4** = BT-4 Parts (all models apply) • **BTE** = Elite Parts (other models my apply) • **BTRC** = Rip Clip Parts • **BTEG** = E-Grip Parts • **BTA** = Apex Parts

QTY	DESCRIPTION	PART #	DIAGRAM #
<b>RECEIVER PARTS</b>			
1	LEFT UPPER RECEIVER	BT4-1	1
1	RIGHT UPPER RECEIVER	BT4-3	3
1	POWER TUBE	BT4-5	5
1	DRIVE SPRING GUIDE	BT4-7	7
1	BOLT HANDLE	BT4-8	8
1	REAR BOLT	BT4-9	9
1	BOLT PLUG	BT4-10	10
1	BARREL ADAPTER	BT4-12	12
1	VALVE BODY	BT4-13	13
1	INTERNAL VALVE SEAT	BT4-14	14
1	PLUNGER CAP	BT4-15	15
1	REAR VALVE SEAT	BT4-16	16
1	VALVE STEM	BT4-17	17
1	CUP SEAL	BT4-18	18
1	EXPANSION CHAMBER PLUG	BT4-21	21
2	LOWER RECEIVER NUT	BT4-24	24
2	LOWER RECEIVER SCREW	BT4-25	25
1	FRONT BOLT	BT4-32	32
1	LINKAGE ARM	BT4-33	33
4	SHORT RECEIVER BOLT	BT4-37	37
6	RECEIVER NUTS	BT4-38	38
2	VALVE SCREW	BT4-39	39
1	VELOCITY SCREW	BT4-40	40
2	TANK ADAPTER NUTS	BT4-45	45
1	FRONT BOLT ORING	BT4-46	46
2	INTERNAL VALVE O-RING	BT4-47	47
2	REAR BOLT & VALVE O-RING	BT4-48	48
1	SHOCK ABSORBER O-RING	BT4-49	49
1	TANK ADAPTER	BT4-51	51
1	GAS LINE	BT4-58	58
1	LONG TANK ADAPTER BOLT	BT4-61	61
1	SHORT TANK ADAPTER BOLT	BT4-62	62
1	VALVE SNAP RING	BT4-64	64
1	INTERNAL VALVE SCREW	BT4-66	66
1	DRIVE SPRING	BT4-69	69
1	BARREL ADAPTER O-RING	BT4-73	73
1	NAME PLATE (ALL TYPES)	BT4-74	74
1	BALL DETENT (RUBBER)	BT4-75	75
1	BOLT HANDLE RUBBER BONNET	BT4-76	76

QTY	DESCRIPTION	PART #	DIAGRAM #
1	BOTTOM COVER	BTRC-2	R-2
1	BATTERY COVER ASSEMBLY	BTRC-3	R-3
1	BALL SLEEVE	BTRC-4	R-4
1	RAIL LOCKING ARM	BTRC-5	R-5
1	MOTOR W/PULLEY AND HARNESS	BTRC-6	R-6
1	PULLEY GEAR	BTRC-7	R-7
1	LARGE GEAR	BTRC-8	R-8
1	DRIVE BELT	BTRC-9	R-9
2	RIP DRIVE AND DRIVE CONE SCREW	BTRC-10	R-10
1	RIP DRIVE	BTRC-11	R-11
5	BOTTOM COVER SCREWS	BTRC-12	R-12
1	BATTERY COVER NUT	BTRC-13	R-13
2	E-CLIP	BTRC-14	R-14
2	BEARING	BTRC-15	R-15
1	ANTI JAM ASSEMBLY	BTRC-16	R-16
1	ANTI JAM SPRING	BTRC-17	R-17
1	DRIVE SHAFT	BTRC-18	R-18
1	SPRING HOUSING	BTRC-19	R-19
1	DRIVE CONE SPRING	BTRC-20	R-20
1	DRIVE CONE	BTRC-21	R-21
1	PULLEY GEAR PIN	BTRC-22	R-22
2	RAIL LOCKING ASSEMBLY	BTRC-23	R-23
1	BATTERY COVER SCREW	BTRC-24	R-24
1	BATTERY COVER WASHER	BTRC-25	R-25
2	RAIL LOCKING NUTS	BTRC-26	R-26
1	POLARITY STICKER	BTRC-27	R-27
2	LOWER BATTERY SPRING TABS	BTRC-28	R-28
1	ON/OFF BUTTON PAD	BTRC-29	R-29
1	CIRCUIT BOARD	BTRC-30	R-30

**E-GRIP PARTS**

1	FRAME	BTEG-1	G-1
1	GRIP	BTEG-2	G-2
1	SOLENOID (COMPLETE)	BTEG-3	G-3
1	CIRCUIT BOARD	BTEG-4	G-4
1	BATTERY HARNESS	BTEG-5	G-5
1	TRIGGER SWITCH W/HARNESS	BTEG-6	G-6
1	RUBBER MAGNET HOLDER	BTEG-7	G-7
1	TRIGGER	BTEG-8	G-8
1	TRIGGER SET SCREW	BTEG-9	G-9
1	SEAR	BTEG-10	G-10
1	SEAR SET SCREW	BTEG-11	G-11
1	SEAR SPRING	BTEG-12	G-12

**RIP-CLIP PARTS**

1	RIP CLIP BODY	BTRC-1	R-1
---	---------------	--------	-----

QTY	DESCRIPTION	PART #	DIAGRAM #
4	GRIP SCREW	BTEG-13	G-13
1	LED COVER	BTEG-14	G-14
1	ON/OFF BUTTON COVER	BTEG-15	G-15
1	TRIGGER PIN	BTEG-16	G-16
1	SEAR PIN	BTEG-17	G-17
2	TRIGGER SWITCH PIN	BTEG-18	G-18
2	CIRCUIT BOARD SCREWS	BTEG-19	G-19
1	SOLENOID RETURN MAGNET	BTEG-20	G-20
1	SOLENOID SCREW	BTEG-21	G-21
1	SOLENOID HOLDER	BTEG-22	G-22
1	CAPACITOR FOAM	BTEG-23	G-23

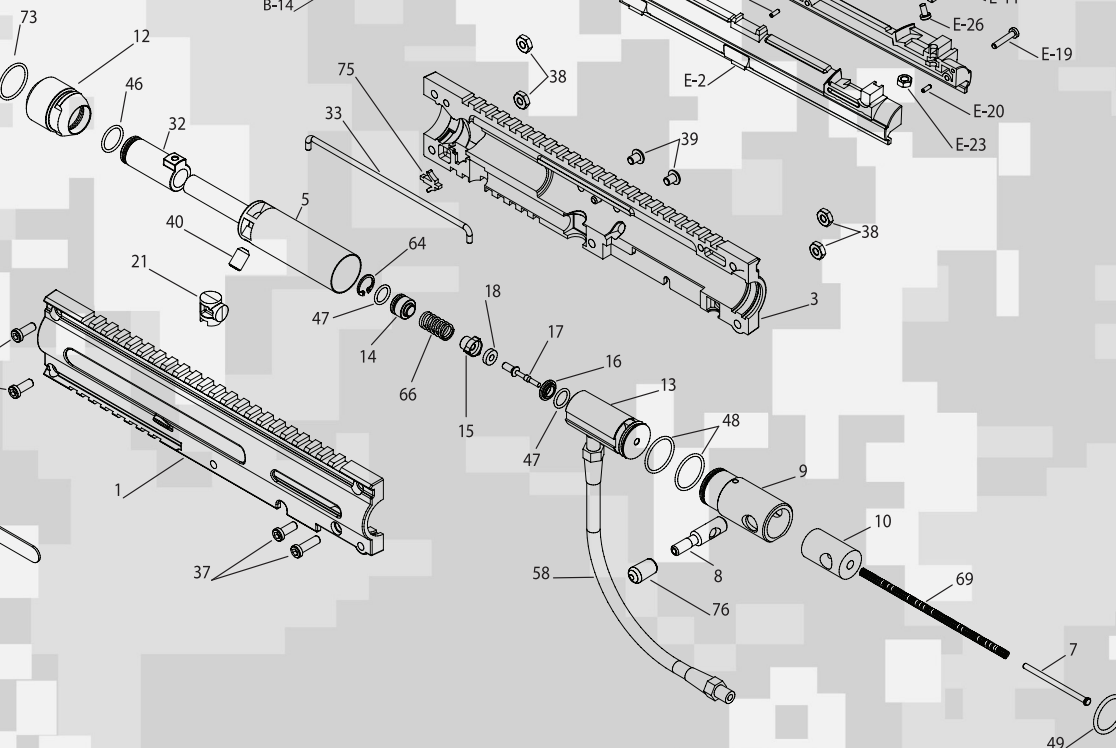
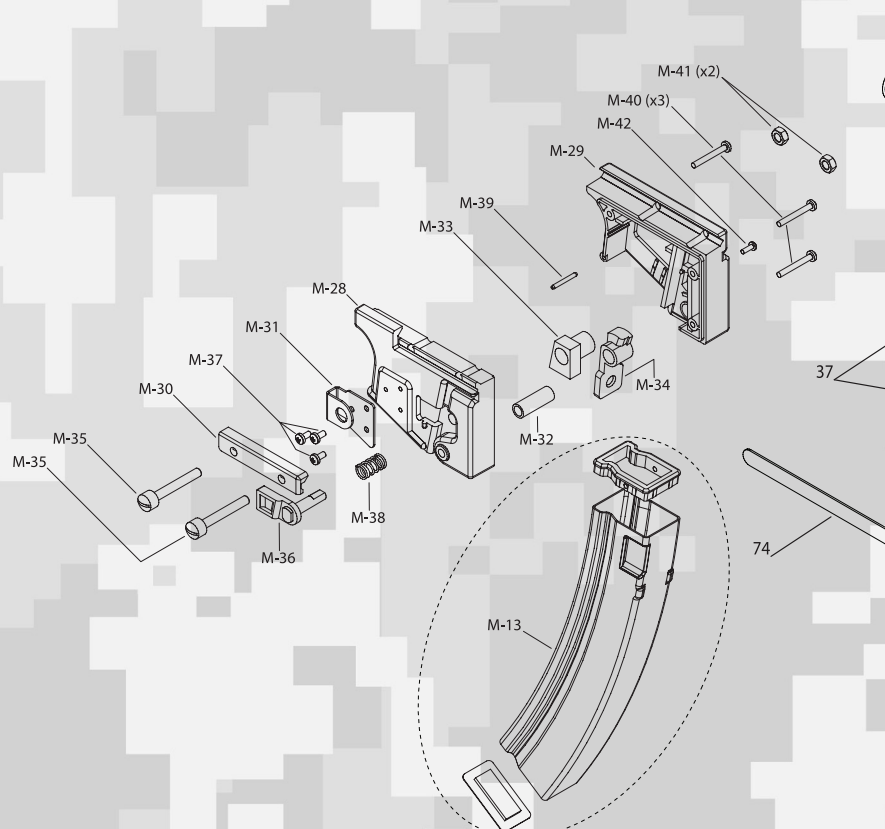
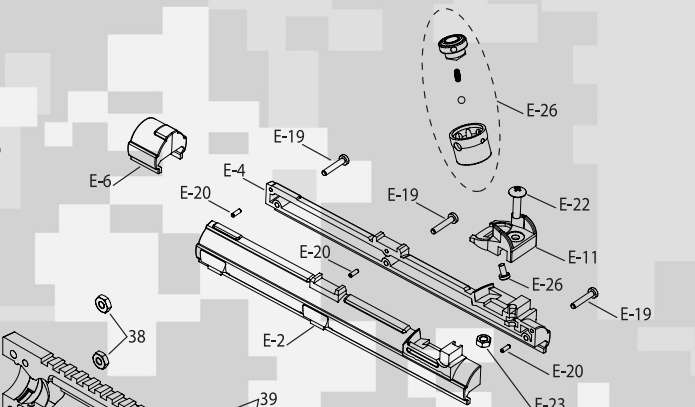
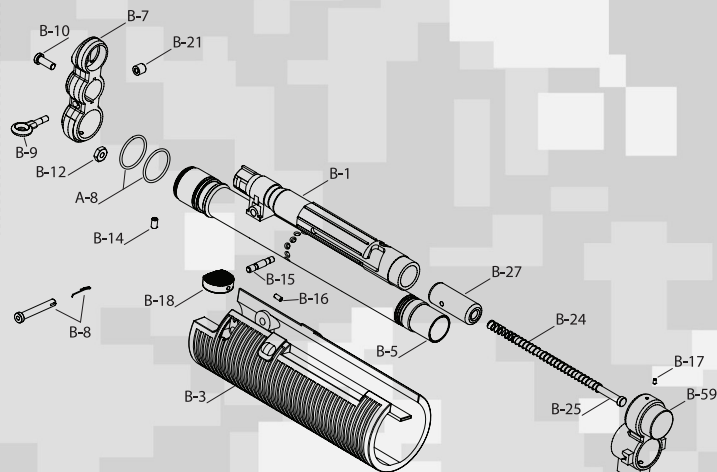
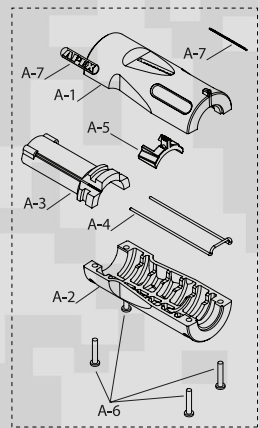
#### BT ELITE- PARTS

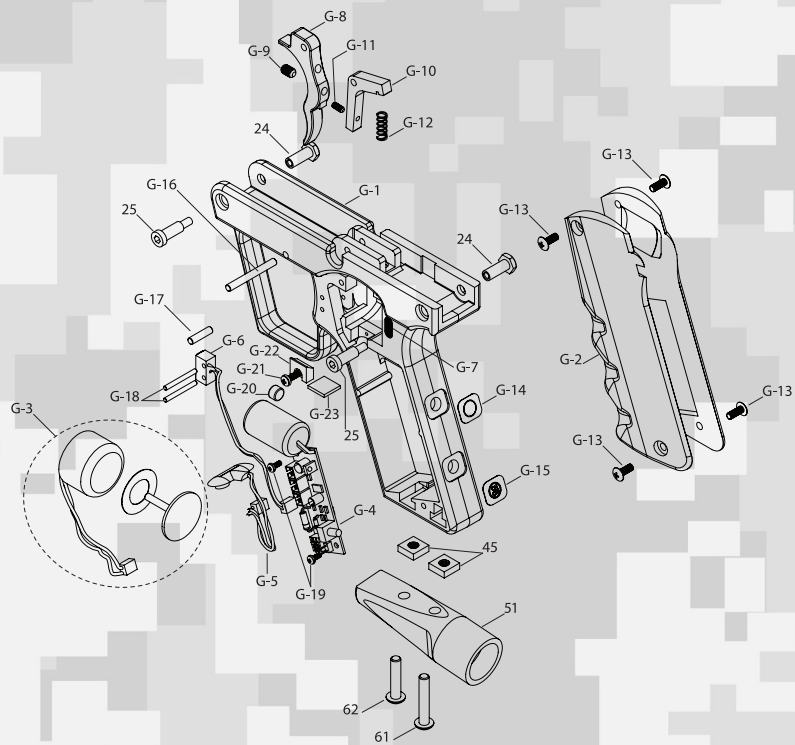
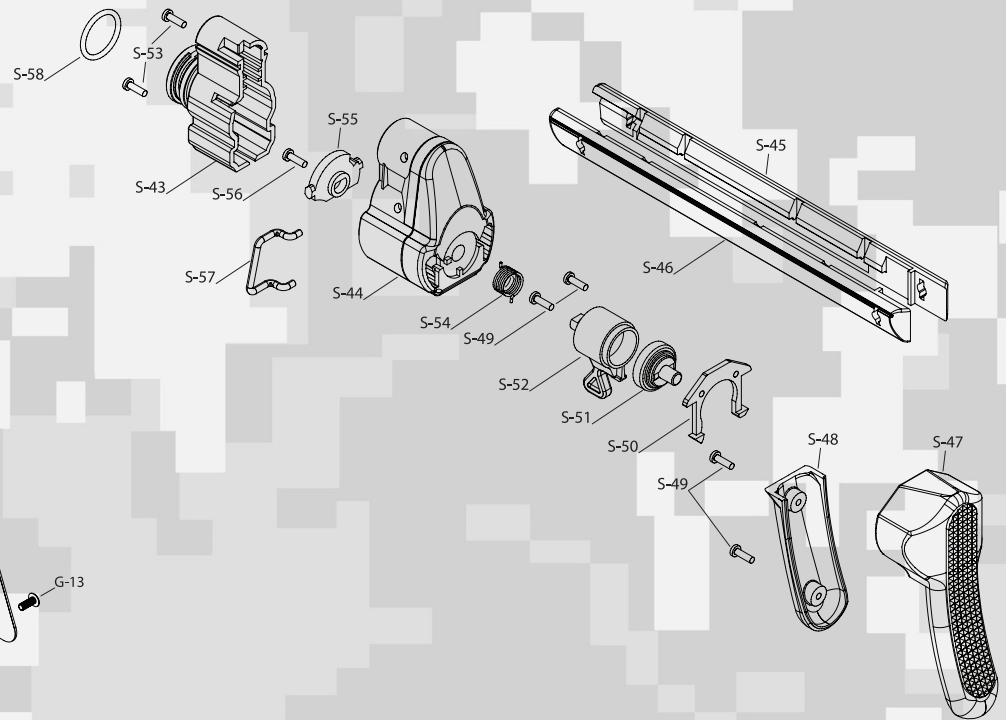
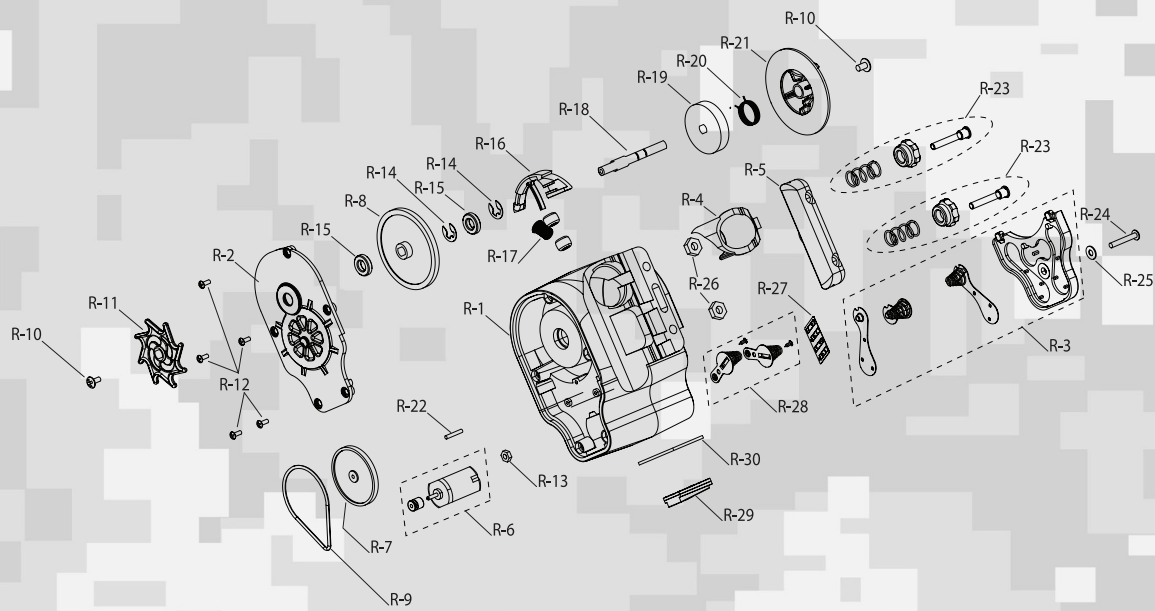
1	BARREL SIGHT BODY	BTE-1	B-1
1	LEFT SIGHT RAIL HALF	BTE-2	E-2
1	FORE GRIP	BTE-3	B-3
1	RIGHT SIGHT RAIL HALF	BTE-4	E-4
1	BARREL (ONLY)	BTE-5	B-5
1	FRONT SIGHT RAIL	BTE-6	E-6
1	FRONT SIGHT	BTE-7	B-7
1	FORE GRIP RETENTION PIN	BTE-8	B-8
1	SLING HOOK	BTE-9	B-9
1	FRONT SIGHT SCREW	BTE-10	B-10
1	REAR SIGHT BODY	BTE-11	E-11
1	FRONT SIGHT NUT	BTE-12	B-12
1	MAGAZINE (COMPLETE)	BTE-13	M-13
2	BARREL SET SCREW (LARGE)	BTE-14	B-14
1	BARREL PIN	BTE-15	B-15
1	BARREL SET SCREW (MEDIUM)	BTE-16	B-16
1	BARREL SET SCREW (SMALL)	BTE-17	B-17
1	COCKING ARM	BTE-18	B-18
3	SIGHT RAIL SCREW	BTE-19	E-19
3	SIGHT RAIL ALIGNMENT PIN	BTE-20	E-20
1	SLING HOOK NUT	BTE-21	B-21
1	SIGHT BODY SCREW	BTE-22	E-22
1	SIGHT BODY NUT	BTE-23	E-23
1	BARREL SPRING	BTE-24	B-24
1	BARREL SPRING STRUT	BTE-25	B-25
1	REAR SIGHT (COMPLETE)	BTE-26	E-26
1	BARREL SIGHT STRIKER	BTE-27	B-27
1	MAGAZINE HOLDER LEFT BODY	BTE-28	M-28
1	MAGAZINE HOLDER RIGHT BODY	BTE-29	M-29
1	MAGAZINE HOLDER RETENTION ARM	BTE-30	M-30

QTY	DESCRIPTION	PART #	DIAGRAM #
1	MAGAZINE HOLDER HOOK	BTE-31	M-31
1	RELEASE SLEEVE	BTE-32	M-32
1	RELEASE ARM STOP	BTE-33	M-33
1	RELEASE ARM	BTE-34	M-34
2	MAGAZINE RETENTION SCREWS	BTE-35	M-35
1	RELEASE MECHANISM	BTE-36	M-36
3	HOOK SCREW	BTE-37	M-37
1	MAGAZINE SPRING	BTE-38	M-38
1	MAGAZINE HOLDER BODY PIN	BTE-39	M-39
3	MAGAZINE HOLDER BODY SCREW	BTE-40	M-40
2	MAGAZINE HOLDER NUT	BTE-41	M-41
1	RELEASE MECHANISM SCREW	BTE-42	M-42
1	STOCK FRONT	BTE-43	S-43
1	STOCK BODY	BTE-44	S-44
1	RIGHT STOCK ARM	BTE-45	S-45
1	LEFT STOCK ARM	BTE-46	S-46
1	STOCK BACK	BTE-47	S-47
1	STOCK BACK COVER	BTE-48	S-48
4	STOCK BACK SCREW	BTE-49	S-49
1	STOCK REAR ARM HOLDER	BTE-50	S-50
1	STOCK ADJUSTER CAP	BTE-51	S-51
1	STOCK ADJUSTER	BTE-52	S-52
2	STOCK FRONT SCREW	BTE-53	S-53
1	STOCK SPRING	BTE-54	S-54
1	STOCK ADJUSTER BACK	BTE-55	S-55
1	STOCK ADJUSTER SCREW	BTE-56	S-56
1	STOCK SLING HOOK	BTE-57	S-57
1	STOCK FRONT O-RING	BTE-58	S-58
1	BARREL REAR CAP	BTE-59	B-59

#### APEX PARTS

1	TOP BODY	BTA-1	A1
1	BOTTOM BODY	BTA-2	A2
1	RUBBER INSERT	BTA-3	A3
1	METAL ARM	BTA-4	A4
1	RAMP SWITCH	BTA-5	A5
4	SCREW	BTA-6	A6
2	APEX STICKER	BTA-7	A7
2	BARREL O-RING	BTA-8	A8







**BT PAINTBALL DESIGNS, INC.  
LIMITED WARRANTY**

BT PAINTBALL DESIGNS, INC. warrants the replacement of any original part due to defect in material and/or workmanship of this marker. This warranty will be in effect for twelve (12) months for parts and twelve (12) months for labor following the original date of purchase for the original purchaser. Such warranty service will be provided only if the warranty registration card included with this manual is filled in completely and on file at BT PAINTBALL DESIGNS, INC. All other service will be duly charged for and returned via UPS C.O.D.

BT PAINTBALL DESIGNS, INC. will replace without charge any original part that is determined by BT PAINTBALL DESIGNS, INC. to be defective under the terms of this warranty. However, shipping charges are not covered hereunder. Failure due to an accident, abuse, neglect, modification, normal wear, operator error, maintenance by other than an authorized BT PAINTBALL DESIGNS, INC. dealer, or use of parts inconsistent with the use originally intended for the marker as sold, is not covered by this warranty.

There are no other warranties or guarantees, expressed or implied, made by BT PAINTBALL DESIGNS, INC. on this marker. The sole and exclusive liability of BT PAINTBALL DESIGNS, INC. and/or its authorized dealers, affiliates, or agents pursuant to this warranty will be for repair or replacement of the defective part; incidental or consequential damages are expressly excluded hereunder.

BT PAINTBALL DESIGNS, INC., its authorized dealers, affiliates, or agents, will not be liable under this warranty, nor under any state or federal law, or the common law or otherwise for any damage or failure, including personal injury, resulting from such use and/or alteration. This warranty gives you specific legal rights, and you may also have other rights that may vary from state to state.

**For warranty parts, service or information contact:**

**BT PAINTBALL DESIGNS, INC.  
3217 EAST WASHINGTON BLVD.  
FORT WAYNE, INDIANA 46803  
260-424-9100  
[info@btpaintball.com](mailto:info@btpaintball.com)**



# WARNING!

This is not a toy. Misuse may cause serious injury or death. Eye protection designed specifically for paintball must be worn by the user and persons within range. Recommend 18 years of age or older to purchase. Persons under 18 years of age must have adult supervision.

**READ THIS MANUAL BEFORE USING.**



BT PAINTBALL DESIGNS, INC.  
3217 E. WASHINGTON BOULEVARD  
FORT WAYNE, INDIANA 46803  
[btpaintball.com](http://btpaintball.com)