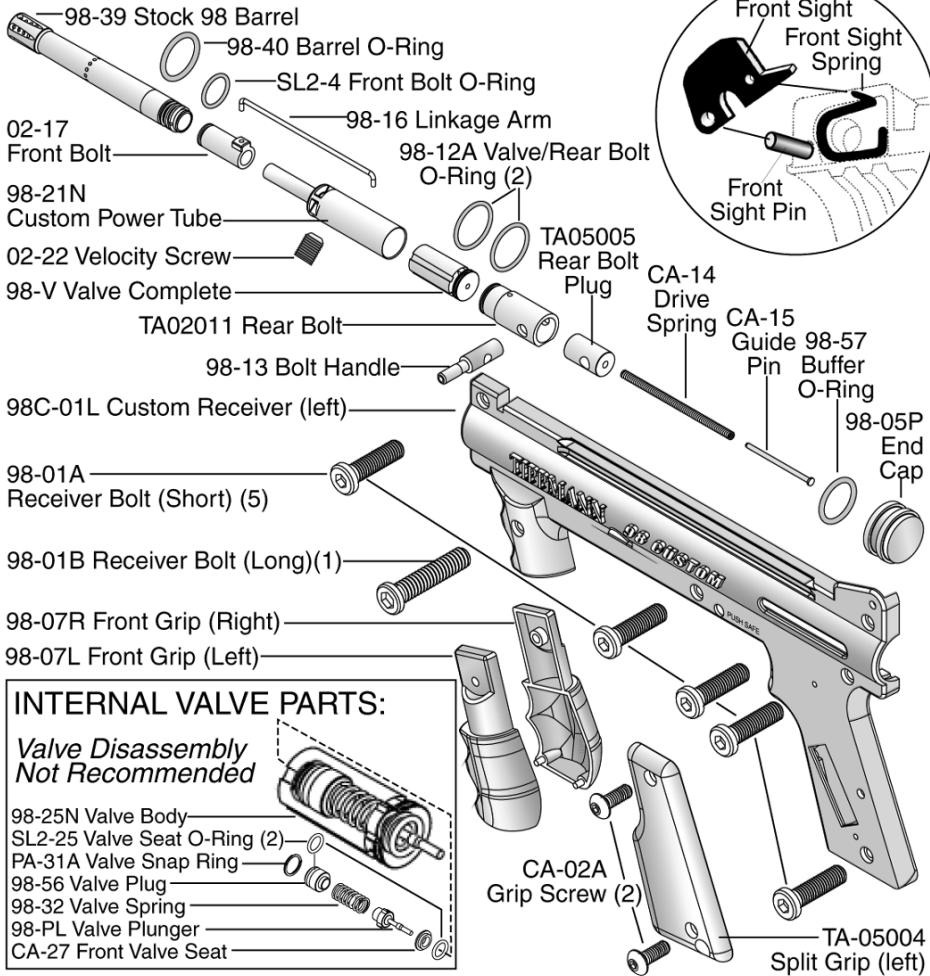


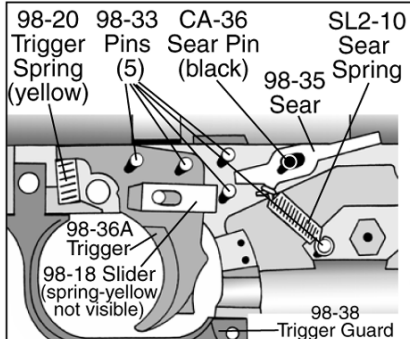
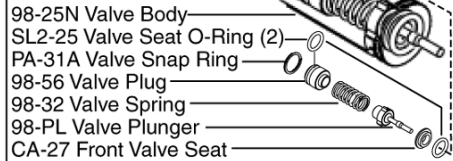
98 CUSTOM™ Parts List

(98 CUSTOM™ WITH BASIC RECEIVER / UPGRADEABILITY)



INTERNAL VALVE PARTS:

Valve Disassembly Not Recommended



TRIGGER ASSEMBLY

- 1) Place 5 pins and 1 black sear pin in the locations as shown.
- 2) Then place the trigger and sear onto pins as shown.
- 3) Loop the sear spring onto the bottom pin and then onto the sear.
- 4) Insert trigger spring (yellow).

WARNING
DO NOT FIELD STRIP OR OTHERWISE DISASSEMBLE THIS MARKER WHILE IT IS PRESSURIZED WITH AIR.

TIPPMANN™
1-800-533-4831
www.tippmann.com

