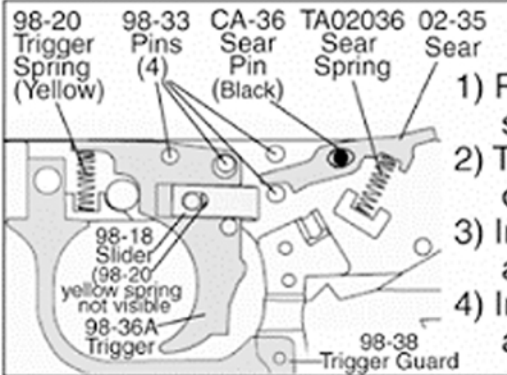
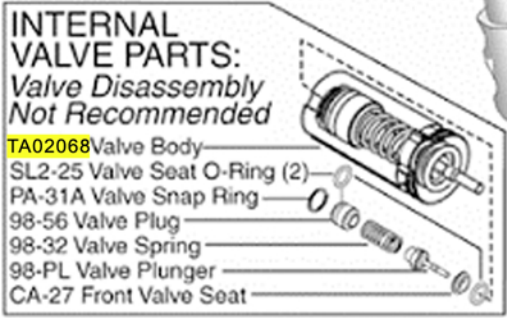
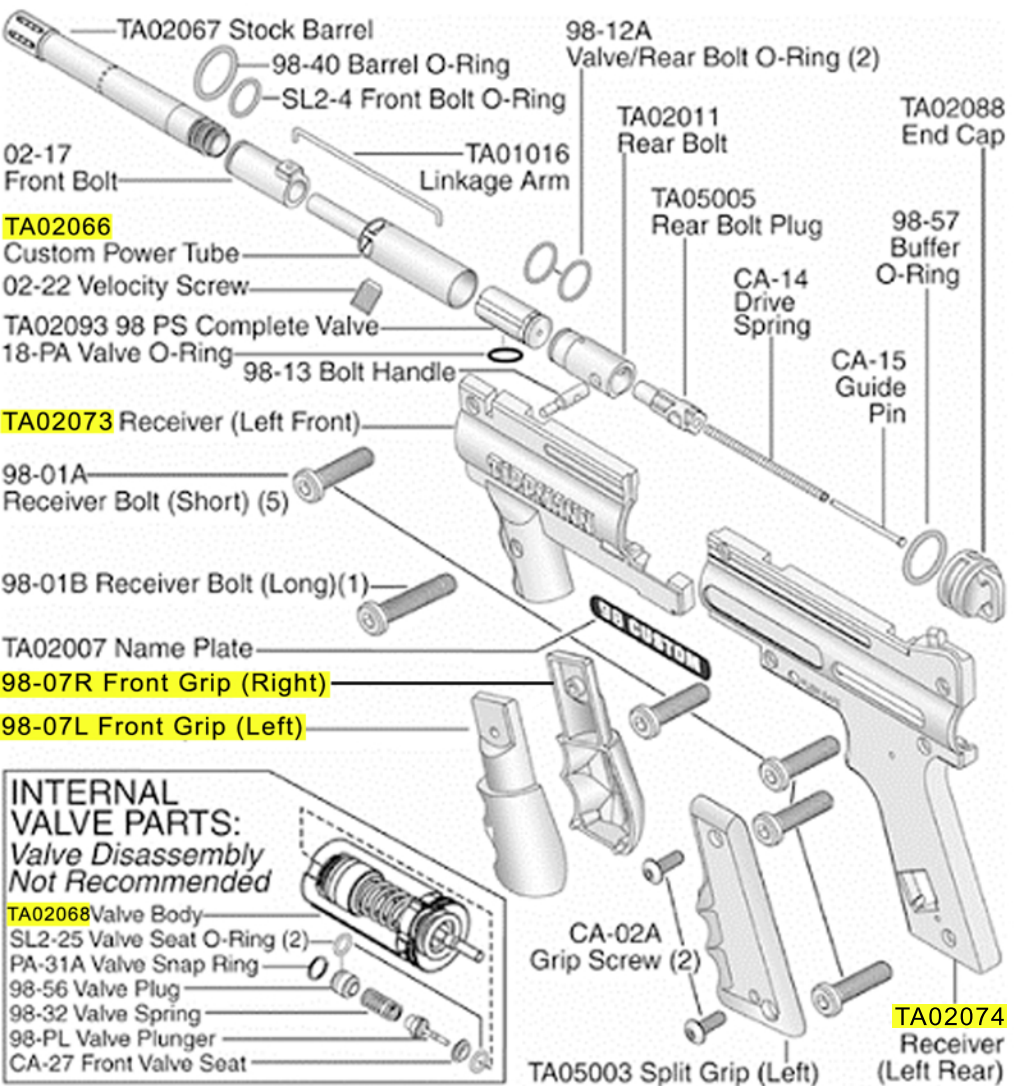
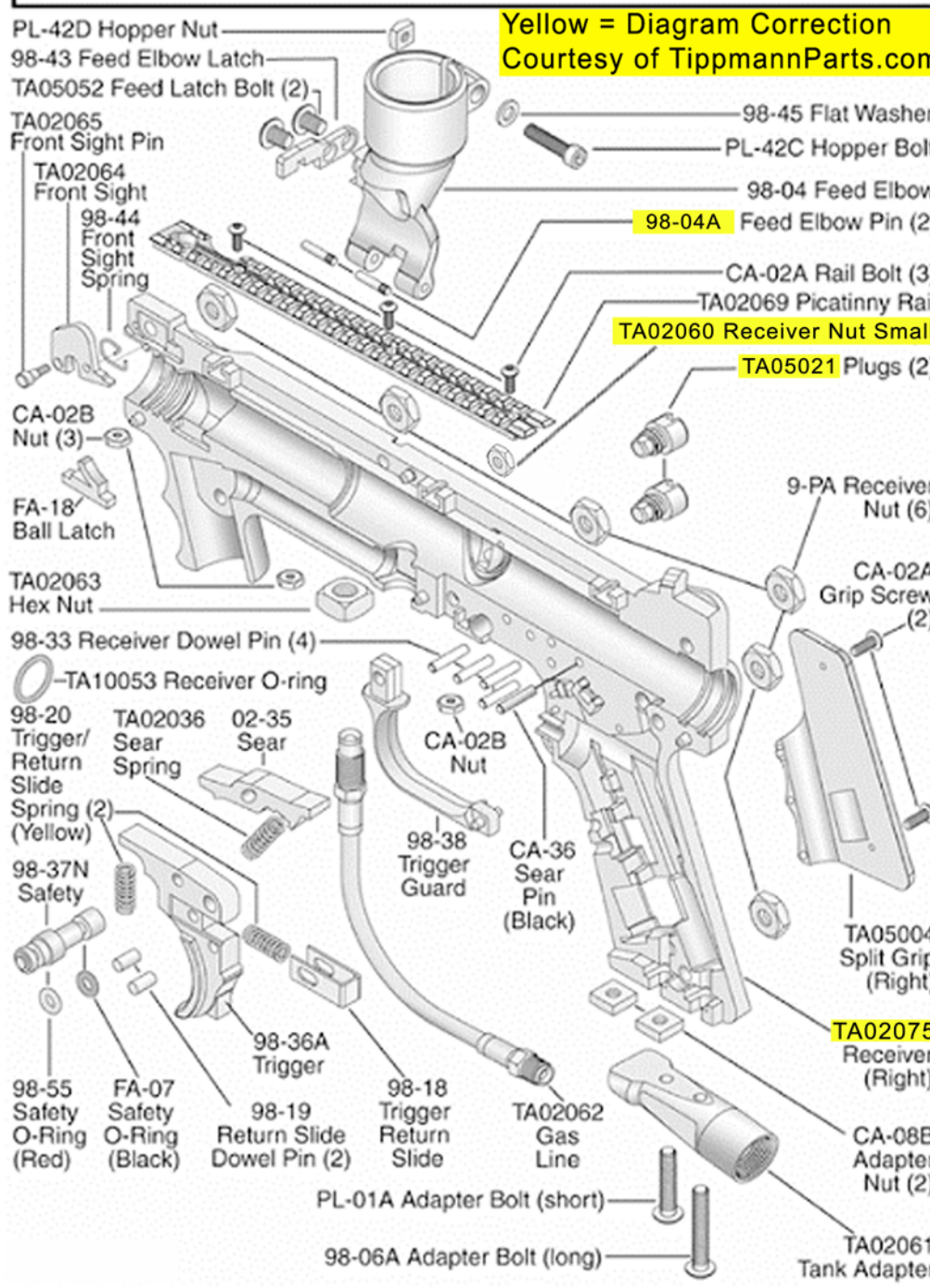


TIPPMANN® 98 CUSTOM PLATINUM SERIES BASIC NON-A.C.T. PARTS LIST



- ### TRIGGER ASSEMBLY
- 1) Place 4 dowel pins and 1 black sear pin into locations as shown.
 - 2) Then place the trigger and sear onto pins as shown.
 - 3) Insert sear spring as shown.
 - 4) Insert trigger spring (yellow) as shown.

WARNING
 DO NOT DISASSEMBLE THIS MARKER WHILE IT IS PRESSURIZED WITH AIR. DO NOT PRESSURIZE A PARTIALLY ASSEMBLED MARKER.



Yellow = Diagram Correction
 Courtesy of TippmannParts.com