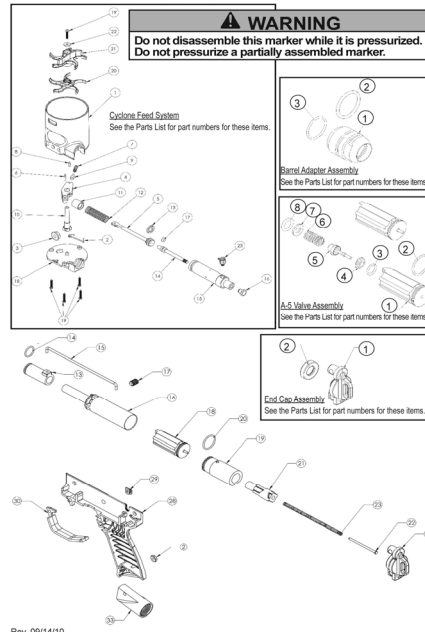
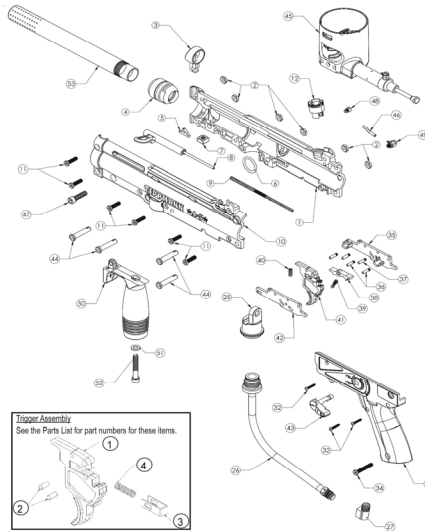


A-5[®] by TIPPMANN[®]

Parts Diagram

Tipmann[®] Service Department
1-800-533-4831
www.tipmann.com



Rev. 09/14/10

A-5 Parts List

ITEM	QTY.	PT. NO.	DESCRIPTION	ITEM	QTY.	PT. NO.	DESCRIPTION
1	1	TA01032	Upper Receiver, Right Half	Cyclone Feed System Assembly (TA30046)			
2	7	9-PA	Nut, Hex - Black	1	1	02-43	Feeder Housing
3	1	02-15	Front Sight	2	1	02-50	Feeder Ratchet Spring
4	1	02-69	Barrel Adapter Assembly	3	1	02-42	1/4 - 20 Flange Nut
5	1	FA-18	Ball Latch	4	1	02-53	Feeder Ratchet
6	1	TA10053	O-Ring	5	1	02-54	Feeder Cylinder Piston
7	1	PL-42D	Nut, Square - Black	6	1	02-52L	7/16"
8	1	02-13	Cocking Handle	7	1	TA01260	Compression Spring
9	1	02-14	Spring, Cocking Handle	8	1	02-52S	Dowel Pin, 3/32 OD x
10	1	TA01031	Upper Receiver, Left Half	9	1	02-51	Ratchet Spring Guide
11	6	98-01A	Screw, LSHCS	10	1	02-49	Feeder Axle
12	1	TA01080	Rear Sight	11	1	02-64	Feeder Cylinder Plug
13	1	02-17	Front Bolt	12	1	02-66	Spring
14	1	SL2-4	O-Ring	13	1	02-63	Piston U-Cup Seal
15	1	TA01016	Linkage Arm	14	1	02-65	Feeder Reset Rod
16	1	02-21	Power Tube	15	1	TA10034	Feeder Cylinder
17	1	02-22	Set Screw, 5/16-24 x 7/16"	16	1	02-61	Feeder Reset Button
18	1	02-V	A-5 Valve Assembly	17	1	SL2-6	O-Ring
19	1	02-11	Rear Bolt	18	1	02-44	Feeder Bottom Plate
20	1	98-12A	O-Ring	19	5	PL-42A	#4 X 5/8 Screw, Black
21	1	TA01010	Rear Bolt Plug	20	1	TA30012	Lower Feeder Sprocket
22	1	CA-15	Pin, Flt. Fillister Head	21	1	TA30011	Upper Feeder Sprocket
23	1	CA-14	Spring	22	1	02-48	#4 Flat Washer
24	1	02-EC	A-5 End Cap Assembly	23	1	20-07	Banjo Fitting Assembly
25	1	02-24	Tombstone Adapter				
26	1	TA01043	A-5 Gasline Assembly	Trigger Assembly (TA10050)			
27	1	TA10025	90 Degree Inverted Flare Elbow (Black)	1	1	TA10021	Trigger, Single
28	1	TA01034	Lower Receiver, Right	2	2	98-19	Dowel Pin
29	1	TA01035	Plug, RT Kit	3	1	98-18	Trigger Return Slide
30	1	02-38	Trigger Guard, Single	4	1	02-20	Spring
31	1	TA01033	Lower Receiver, Left				
32	3	PL-42A	Screw, #4 x 5/8 Black	Valve Assembly (02-V)			
33	1	02-06	Air Supply Adapter (ASA)	1	1	02-25	Valve Body
34	1	98-01B	Screw, 10-32 x 1.125", LSHCS	2	1	98-12A	O-Ring
35	1	02-67R	Trigger Plate w/Spacers, Right	3	1	SL2-25	O-Ring
36	4	02-33	Dowel Pin, 1/8 x 1/2, w/Knurl	4	1	CA-27	Valve Seat
37	1	02-33A	Dowel Pin, Black	5	1	98-PL	Valve Plunger
38	1	02-35	Sear	6	1	PA-32	Spring
39	1	02-20	Spring	7	1	02-71	Washer, 9/32 Flat
40	1	02-20S	Spring	8	1	02-72	O-Ring
41	1	TA10050	Trigger Assembly Complete				
42	1	02-67L	Trigger Plate, Left	A-5 End Cap Assembly (02-EC)			
43	1	TA01022	Safety	1	1	TA01015	End Cap - 08
44	4	02-PIN	Push Pin, Assy	2	1	TA01014	Impact Washer
45	1	TA30046	Cyclone Feed System Assembly Complete				
46	1	20-18	Hose	Barrel Adapter Assembly (02-69)			
47	1	02-41	1/4-20 UNC x 7/8 SHCS	1	1	N/A	Barrel Adapter
48	1	TA05021	Power Tube Plug	2	1	TA01008	O-Ring
49	1	20-07	Banjo Fitting Assembly	3	1	02-40	O-Ring
50	1	TA01036	Grip, Front				
51	1	98-45	Washer, M6				
52	1	TA01045	Screw, 1/4"-20 UNC X 1.5" SHCS				
53	1	TA01046	Barrel				