

⚠ WARNING

EYE PROTECTION DESIGNED FOR PAINTBALL USE MUST BE WORN AT ALL TIMES WHEN HANDLING THIS MARKER BY THE USER AND ANY PERSON WITHIN RANGE. DO NOT DISASSEMBLE THIS MARKER WHILE IT IS PRESSURIZED WITH AIR. REMOVE AIR SUPPLY CYLINDER OR CARTRIDGE BEFORE DOING ANY DISASSEMBLY. DISASSEMBLING THE RECEIVER WHILE UNDER AIR PRESSURE WILL CAUSE PERSONAL INJURY &/OR DAMAGE TO THE MARKER. DO NOT OPERATE THIS MARKER WITH PARTS MISSING OR DAMAGED. IF DURING THE COURSE OF THIS INSTALLATION, A PART IS LOST OR FOUND TO BE DAMAGED, OBTAIN A REPLACEMENT PART BEFORE CONTINUING REASSEMBLY.

READ EACH STEP COMPLETELY BEFORE PERFORMING STEP.

THE A-5 LOW PRESSURE KIT INCLUDES: (Loctite & gun oil not shown)

A-5 Low Pressure ASA Adaptor (part # PB-26)



A-5 Low Pressure Valve (part # 02-25L)



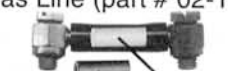
A-5 Low Pressure Bolt (part # 02-11L)



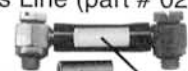
A-5 Low Pressure Bolt Insert (part # 02-08L)



A-5 Low Pressure Feed Gas Line (part # 02-100)



Orifice (Fits inside) (part # 02-102)



A-5 Low Pressure 90° Elbow Fitting (part # 98-10)



A-5 Low Pressure Gas Line (part # 98-09C)



STEP 1: Prepare Marker for SAFE DISASSEMBLY before beginning disassembly.

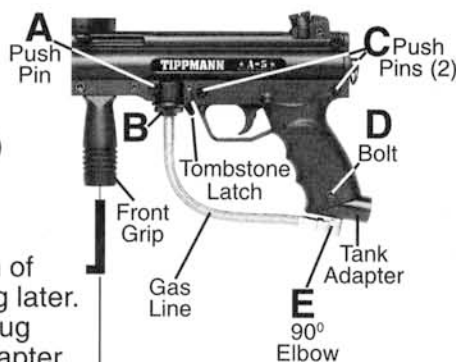
To do so, you must: (1-unload your marker; (2-remove air source; (3-discharge stored air (4-uncock marker before further disassembly.

- 1) Unload your marker:** first remove the hopper. Then, point your marker in a safe direction and fire several times to be sure there are no balls left in the feeder or lodged in the chamber.
- 2) Remove air source:** To remove a charged air cylinder, turn the cylinder approximately 3/4 of a turn counterclockwise or out. This allows the tank pin valve to close so that no air will enter the marker. Point the marker in a safe direction and fire the remaining air in the marker by pulling the trigger until the marker stops firing. (This may take 4-5 shots)
 - If your marker keeps firing after you have turned the tank 3/4 of a turn, the tank pin valve has not closed yet and you may have to turn the tank counterclockwise a little further.
 - If you turn the tank 3/4 of a turn and it begins to leak before you pull the trigger you have turned it too far and may have damaged the tank o-ring.
- 3) After air tank is removed, point & fire the marker in a safe direction until stored air is completely discharged.**
- 4) Put marker in the uncocked position:** hold the bolt cocking handle back - then pull the trigger and release handle forward to un-cock the marker.

STEP 2: Prepare Marker for Low Pressure Kit parts installation by removing the following...

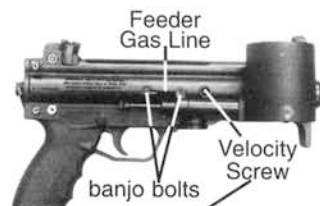
Set up a table with plenty of space to work. Tools You Need: 1/8" & 3/16" allen wrenches (included in marker accessory pack); a 7/16" wrench and a 1/4" socket wrench.

- 1) Remove Gas Line From Upper Receiver by removing Tombstone Push Pin (A); depressing Tombstone Latch and pulling Tombstone adapter/gas line plug (B) from upper receiver.
- 2) Remove lower receiver from upper receiver by taking out the 2 push pins (C) holding them together.
- 3) Remove bolt (D) holding tank adapter from lower receiver.
- 4) Remove old gas line 90° elbow fitting (E) from tank adapter with 7/16" wrench.
 - Clean tank adapter threads for insertion of new 90° elbow fitting later.
 - Unscrew gas line plug from Tombstone adapter.
- 5) Remove front grip with allen wrench.

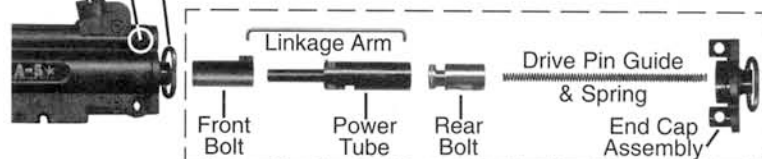


Store old gas line/elbow fitting; front grip; feeder gas line; valve; and rear bolt as they will not be reused during the installation of the A-5 Low Pressure Kit.

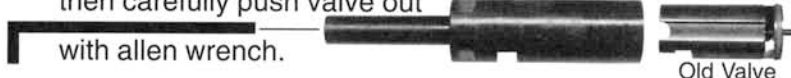
- 6) Remove feeder gas line (2 banjo bolts) with screw driver.
- 7) Remove valve from power tube. You will need to remove the drive assembly from the upper receiver as follows:



- Screw velocity screw in past receiver.
- Remove upper push pin holding end cap in place.
- Pull end cap out and tilt marker up, drive assembly parts should slide out the back.



- 8) Remove valve from power tube. Be sure velocity screw is turned all the way out then carefully push valve out with allen wrench.



STEP 3: INSTALLING THE A-5™ LOW PRESSURE KIT

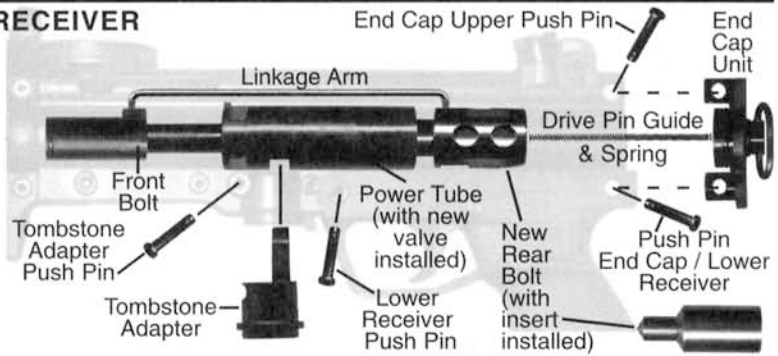
❑ INSTALL NEW VALVE INTO POWER TUBE

- 1) ❑ Keep the notches for Tombstone aligned and insert new valve with o-ring in place and oiled.
- 2) ❑ Insert Tombstone to check power tube/valve alignment.



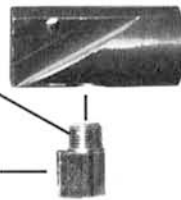
❑ REINSTALL DRIVE ASSEMBLY PARTS INTO UPPER RECEIVER

- 1) ❑ Assemble front bolt, power tube (with new valve installed); new bolt (with oiled o-ring in place and bolt insert inside); and hold together with linkage arm positioned into top of front bolt and rear bolt as shown.
- 2) ❑ Insert reassembled parts until Tombstone adapter can be inserted and velocity screw can be accessed. (You may need to jiggle marker while sliding parts in). With Tombstone adapter inserted, insert push pin to hold Tombstone adapter in place.
- 3) ❑ Insert drive spring & drive pin, end cap unit and top end cap push pin.
- 4) ❑ Reinstall lower receiver to upper receiver and insert 2 lower receiver push pins to secure.

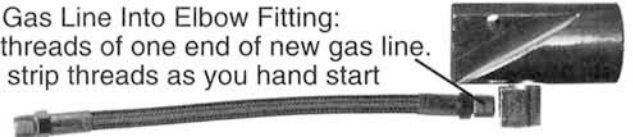


❑ ASSEMBLE NEW GAS LINE, 90° ELBOW AND TANK ADAPTER:

- 1) ❑ Apply locktite to threads of new 90° elbow and be careful not to strip threads as you hand start & screw elbow into tank adapter with 1/2" wrench.



- 2) ❑ Install New Gas Line Into Elbow Fitting: Apply locktite to threads of one end of new gas line. Be careful not to strip threads as you hand start & screw gas line into elbow fitting with 7/16" wrench.



- ❑ Be sure to keep elbow fitting aligned properly in tank adapter.

❑ INSTALL REGULATOR HOOK-UP, LOW PRESSURE CHAMBER, GAS LINE AND REGULATOR

1 ❑ INSTALL REGULATOR HOOK-UP:

- 1) ❑ Align threads into front grip nut.
- 2) ❑ Align top to fit into receiver slot.
- 3) ❑ Start Hook-Up bolt into front grip nut with 1/4" socket (*don't tighten until specified*).

2 ❑ INSTALL LOW PRESSURE CHAMBER:

- 1) ❑ Lubricate low pressure chamber o-ring with gun oil.
- 2) ❑ While being careful not to strip threads, insert through Hook-Up and hand start & screw into Tombstone adapter until hand tight.
- 3) ❑ Complete Tightening Hook-Up with 1/4" socket.

3 ❑ ATTACH NEW GAS LINE TO REGULATOR:

- 1) ❑ Apply locktite to threads on end of new gas line.
- 2) ❑ Be careful not to strip threads as you screw gas line into Regulator with 7/16" wrench. Be sure to keep 90° elbow fitting aligned properly in tank adapter.



4 ❑ ATTACH TANK ADAPTER TO LOWER RECEIVER:

- 1) ❑ Align tank adapter into lower receiver and
- 2) ❑ Insert receiver bolt, with 1/8" allen wrench to complete tank adapter installation.

5 ❑ INSTALL REGULATOR* INTO HOOK-UP

- 1) ❑ Lubricate regulator o-ring with gun oil.
- 2) ❑ While being careful not to strip threads, hand start & screw into Hook-up until hand tight. (Optional Tippmann™ Regulator shown)

*NOTE: Install regulator of your choice. This A-5™ Low Pressure Kit contains gas line length for installing optional Tippmann™ Regulator part # H-VR(BL).

REGULATOR TUNING / SETUP

If you do have a pressure gauge:

- 1) Set input pressure to 325 psi by adjusting regulator. (Adjust Tippmann Regulator screw with 3/32" allen wrench.)
- 2) Adjust velocity screw to desired velocity.

If you do not have a pressure gauge: (A chronograph will be required for this setup)

- 1) Screw velocity screw all the way in.
- 2) Back the velocity screw out 4 1/2 turns.
- 3) Set input pressure so approximately 280 fps is achieved by adjusting the regulator. (Adjust Tippmann Regulator screw with 3/32" allen wrench.)
- 4) For different velocities adjust velocity screw from there.



OPTIONAL PRESSURE GAUGE: Part #02-101

NOTE: Marker must be prepared for safe disassembly as per STEP 1 before pressure gauge installation or removal.

- 1) ❑ To install optional pressure gauge first remove 1/8" Pipe Plug from bottom of low pressure chamber.
- 2) ❑ Clean threads of low pressure chamber.
- 3) ❑ Put locktite on threads of pressure gauge then while being careful not to strip threads, hand start & screw in until tight.

NOTE: IF YOU HAVE A RESPONSE TRIGGER KIT ON YOUR A-5™:

You will need to contact Tippmann™ Customer Service at 1-800-533-4831 for the following parts which will be shipped to you free of charge.

- 1) New 1/8" Banjo "T" fitting
- 2) New Flow Control with 1/8" Barb Fitting.