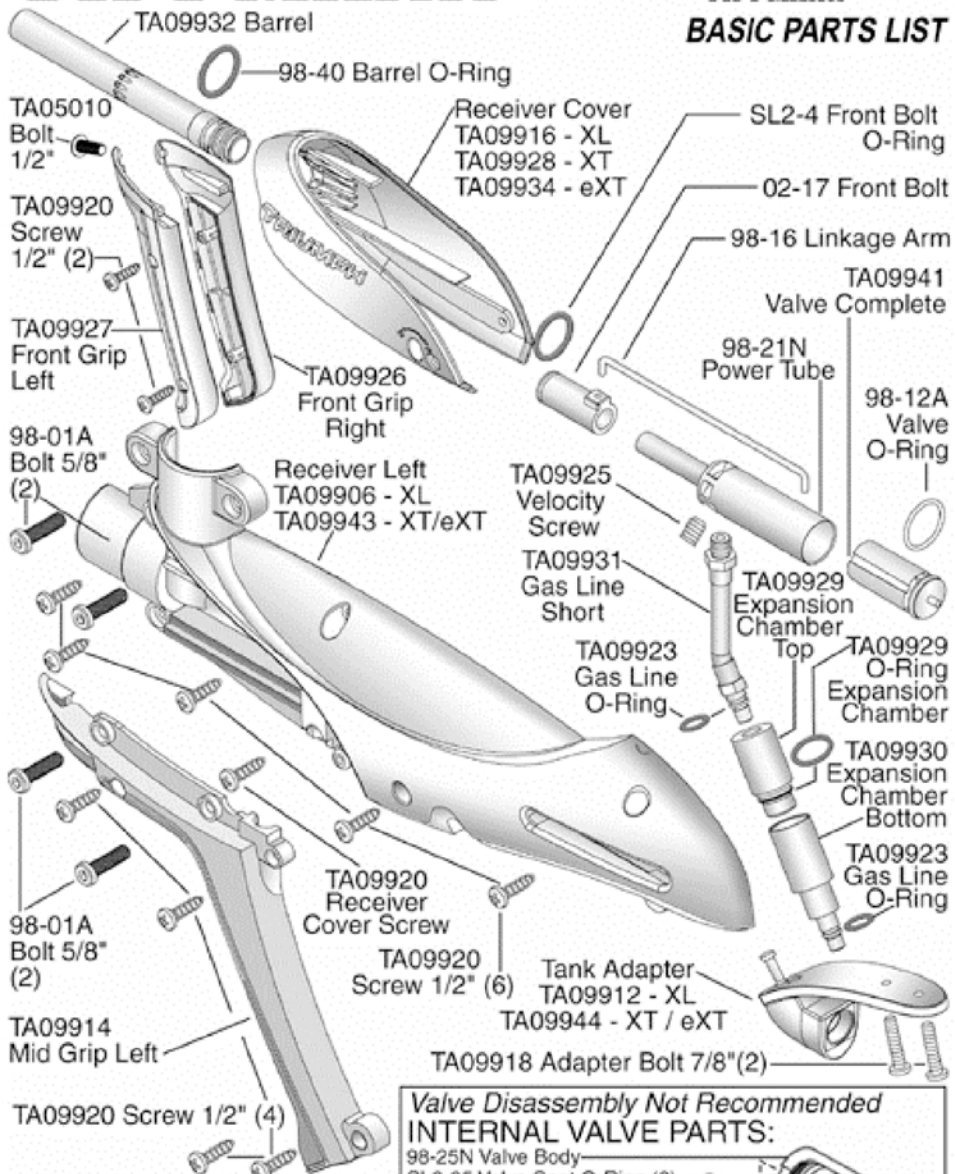


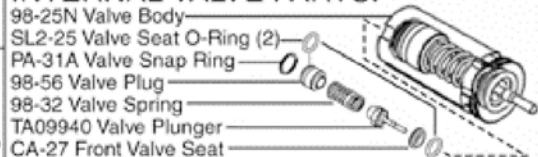
TIPPMANN TRIUMPH XT

BY TIPPMANN

BASIC PARTS LIST

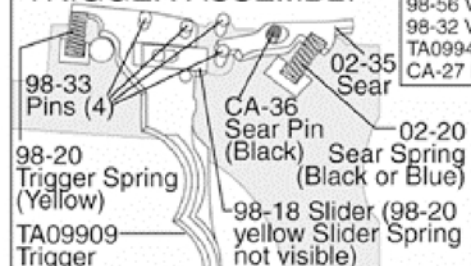


Valve Disassembly Not Recommended INTERNAL VALVE PARTS:



- 1) Place 4 dowel pins and 1 black sear pin into locations as shown.
- 2) Then place the trigger and sear onto pins as shown.
- 3) Insert sear spring (black or blue) as shown.
- 4) Insert trigger spring (yellow) as shown.

TRIGGER ASSEMBLY



WARNING

DO NOT DISASSEMBLE THIS MARKER WHILE IT IS PRESSURIZED WITH AIR. DO NOT PRESSURIZE A PARTIALLY ASSEMBLED MARKER.

TRIUMPH BY TIPPMANN

